

harvest

Howard County

AN AGRI-TOURISM GUIDE



Farm-City Celebration
Schedule of Events

PASSPORT TO FUN

Get rewarded for visiting local farms

Farms for all Seasons

Clark's Elioak Farm

Farming in Howard County since 1797



Petting Farm • Pony Rides • Hayrides • Birthday Parties • Educational Tours • Fall Season Pumpkin Patch • Enchanted Forest Attractions & More



Meats & Eggs available year-round • Summer Roadside Produce Stand



10500 CLARKSVILLE PIKE, ELLICOTT CITY, MD 21042
410-730-4049 | clarklandfarm.com



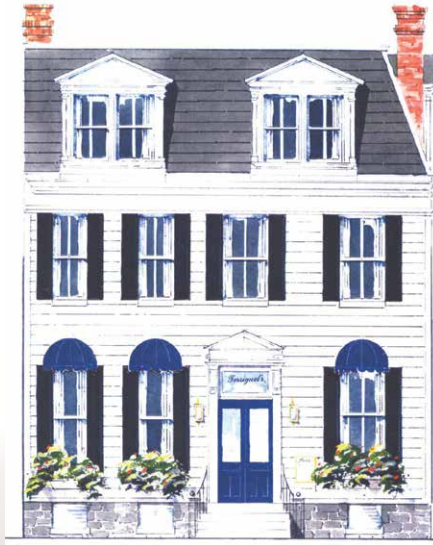


Tersiguel's

FRENCH COUNTRY RESTAURANT

CELEBRATING 41 YEARS

Located in Historic Ellicott City, Tersiguel's is an original "from the farm to your plate" dining experience since 1990. Our seasonal menu offers a blend of both traditional and modern takes on French Country fare.



www.tersiguels.com

8293 Main Street, Ellicott City, MD 21043

410-465-4004

twitter - tersiguelsFCR • Facebook - tersiguels
Gift cards available • Private rooms • Book your holiday parties now
Zagat rated • Howard County Best Chef 2010/2011



welcome to Harvest — Howard County Magazine!

Howard County recognizes the importance agriculture brings to the economy, health and environment. The Howard County Economic Development Authority and Howard County Tourism & Promotion have partnered to showcase this vital industry and the farms that make up agriculture in this thriving county.

In this guide you will find opportunities to explore the farms during the different seasons and to make memories with your family while purchasing the locally grown foods that our farms provide. There is always a lot to do while visiting a farm, from pumpkin patches, cutting or pick-your-own, to wine making, to cheese pairings to spinning alpaca fiber. Area farms are not only fun for all ages; they provide an educational opportunity to learn where food and household goods are grown and produced.

Agriculture has also played a vital role in the history of Howard County's growth and development. With over 300 farms, Howard County's agricultural industry is diverse in its offerings while providing beautiful countryside to explore.

We hope you enjoy Harvest-Howard County as we have enjoyed working with the farms, restaurants and many groups that utilize local products to develop our strong economy.

For more information stop in the Howard County Welcome Center in Old Ellicott City or call 410-313-1900 or go to VisitHowardCounty.com/Outdoors/Farms.

Happy exploring!



facebook.com/HoCoTourism
twitter.com/visithocomd
instagram.com/VisitHoCoMD

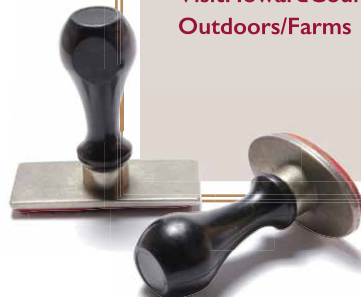
**GET REWARDED
FOR YOUR VISITS!**

PASSPORT PROGRAM

When planning your visits be sure to have participating farms stamp the Passport Portion of their guide listing. Collect a stamp from 6 or more farms and be rewarded with a Harvest-Howard County reusable shopping bag filled with offers from participating farms and advertisers in this guide (see page 40). Redeem your stamped farm listings at the Howard County Welcome Center in Old Ellicott City located at 8267 Main Street, Ellicott City, Maryland 21043.

For more information stop in the Howard County Welcome Center in Old Ellicott City or call 410-313-1900 or go to

**[VisitHowardCounty.com/
Outdoors/Farms](http://VisitHowardCounty.com/Outdoors/Farms)**





Dear Friends:

Howard County is rich in agricultural heritage and offers plenty of rural diversity for everyone. We have livestock and dairy operations, fruit and vegetable farms, and tree farms and nurseries, as well as newer farm breweries and other agri-tourism opportunities. Being a lifelong county resident, I grew up helping with cattle and orchard harvesting myself.

As County Executive, I am committed to keeping this part of our community vibrant and successful. We support eight farmers markets across Howard County. The Roving Radish is bringing quality locally grown products to those who need better access with nearly 200 meal kits per week. This year, it is making deliveries to local restaurants as another way to get local products to the marketplace and to consumers. I also am excited to work with a new agriculture liaison in the Office of Community Sustainability who will be focused on projects and initiatives with our local farmers.

I invite you to take part in supporting and understanding our farming community as well. The farmers markets are a great way to meet neighbors and bring home fresh products for your family. The county also offers the Farm Academy for those who want to learn more about how farmers operate. The Howard County Fair and other exhibits are great fun and educational for all ages. I look forward to seeing YOU around the farm.



Sincerely,

Allan H. Kittleman
Howard County Executive

The Howard County Economic Development Authority (HCEDA) is proud to be a part of the first ever printing of the Howard County Harvest magazine and we thank you for taking the time to read what is between its covers.

We at the HCEDA know the importance that farming plays in supporting and growing a local economy which is why we work all year long to support and advocate for the local farmer and the farming community. Food production is arguably the oldest industry in the world and has as much importance today as it has for millennia.

With a recent resurgence into the "Buy Local" movement we are seeing strong rippling effects throughout the local economy. The County's farmers market scene continues to grow with the addition of an 8th market in the county for 2016 and an expansion of restaurants and breweries offering Farm-To-Table and Farm-To-Glass options. Additionally, with the

expansion of farm tours, pick-your-own experiences, and agritourism; farming operations have found ways to diversify their offerings and find greater financial stability.

The relationships that these farmers have formed with the public and area businesses keep money in the local economy where it can exponentially grow its economic impact. It is your choice to support local agriculture that keeps small farms open and thriving and the economy growing. This is why we work tirelessly all year long in support of local agriculture.

Through a strong bond between businesses and the public, Howard County will continue to have a long legacy of agriculture for years to come. Thank you and happy harvesting!



contents



FALL

- 8 From Field to Fermented
- 10 Fall Fun on the Farm
- 12 Down on the Farm



WINTER

- 14 Time for CSA Signup
- 18 Holidays on the Farm



SPRING

- 22 Cooking with Herbs
- 24 Buy Local
- 26 Maryland Sheep & Wool Festival

PUBLISHER:

Custom Media Options in partnership with Howard County Economic Development Authority and Howard County Tourism & Promotion

PROJECT COORDINATORS:

AMANDA HOF, Director of Development
Howard County Tourism & Promotion
410-313-1904 / Amanda@VisitHowardCounty.com

KATHY JOHNSON, Agricultural Development Manager
Howard County Economic Development Authority
410-313-6500 / kjohnson@hceda.org

KARMEN OSEI



SUMMER

- 28 Fresh Local Meals Made Easy
- 30 Howard County Restaurant Weeks: Not Just for Foodies
- 34 The Howard County Fair: A Celebration of Heritage

36 A Year on the Farm

38 Howard County Farms

44 **SCHEDULE OF EVENTS:**
Howard County Farm-City Celebration

SPECIAL THANKS:

BRIAN SHEAVLY, Marketing Director
Howard County Economic Development Authority
410-313-0721 / bsheavly@hceda.org

JACKIE BAUER, Intern
Howard County Economic Development Authority

SARAH KURTANICH & KARMEN OSEI
Howard County Tourism & Promotion

Howard County Economic Development Authority and Howard County Tourism & Promotion are recipients of grant programs through Howard County Government that made this publication possible.

Photo contributions: Christine Delmont-Small, Alice Settle-Raskin, Brian Sheavly

MARBIDCO Has Assisted Some of Your Farm Business Neighbors... Can We Help You, Too?



Did you know MARBIDCO has assisted with financing more than a dozen Howard County farm-related businesses, often by working in collaboration with the Howard County Economic Development Authority?

Since its inception in 2007, MARBIDCO has funded over 350 farm and rural business projects in almost every county in Maryland. Additionally, MARBIDCO has assisted more than 160 young and beginning farmers (many with helping to purchase their first farms); supported the implementation of almost 140 on-farm value added processing projects; and, helped State and county governments to preserve rural working land through bond finance programs.

MARBIDCO's popular business lending program, the Maryland Resource-Based Industry Financing Fund (MRBIFF), helps meet the unique financing needs of Maryland farm, forestry and seafood businesses. Young and beginning farmers are a special focus of this program. The maximum loan amount is \$250,000 for acquisition of equipment and fixed assets, \$450,000 for real estate purchases, food/meat processing and renewable energy projects, and \$650,000 for large-scale food/fiber processing projects (of \$2.5 million and up). A matching Farm Credit, commercial bank, or county agency participation is required.

To find out how MARBIDCO programs can help with your farm or forestry business financing projects, please contact us at (410) 267-6807, or visit us on the web at www.marbidco.org.



Pictured are two examples of the matching grants made by MARBIDCO and the Howard County Economic Development Authority using the Local Government Ag/RBI Cost Share Program. At left: The on-farm meat freezer at Clark's Elioak Farm. Above: Heritage Hills' compost turner.



FALL



From Field *to* Fermented

While Farm to Table has become a familiar catch phrase for many “Farm to Glass” is just beginning to make a whole new impact on today’s craft beer drinkers. With many local breweries wanting to source their raw materials locally, the distance from field to consumer is getting shorter each year.

Howard County is no exception to this phenomenon as farmers have recognized that an expanding winery, brewery and distillery industry is an opportunity to market their locally grown products.

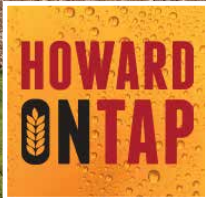
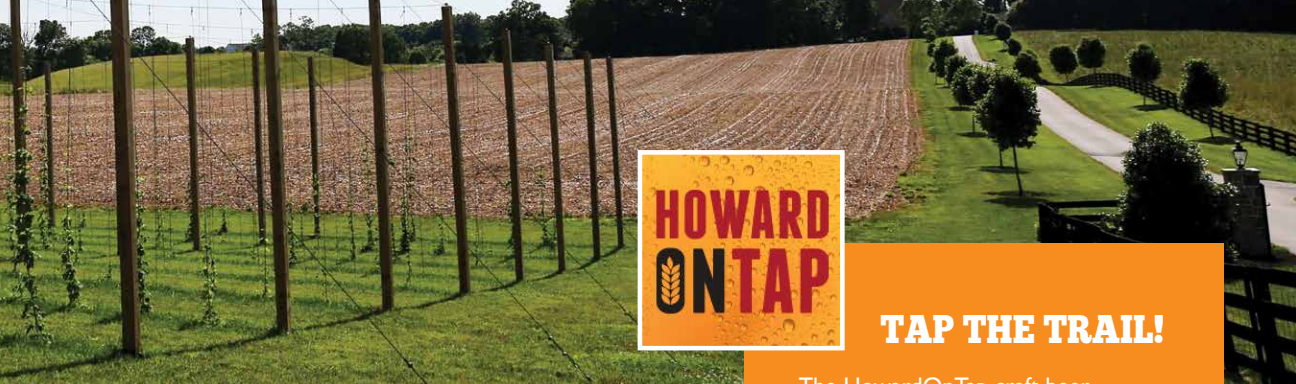


For many years Howard County farms have grown the wheat, corn, barley, herbs, fruits and vegetable used to produce and flavor beers, whiskey and wine. It was not until the recent addition of microbreweries and a distillery to Howard County that farms began adding the production of hops and micro malting facilities to their facilities. Many of the county’s microbreweries and the distillery have shown their support of the agriculture industry by purchasing locally grown products to incorporate into their products.

From their first talk with the Howard County Development Authority, Lost Art Distillery, which will be opening in 2016, was focused on using locally grown wheat, rye and corn for their whiskeys and bourbons. The owners were focused on matching with farmers that would provide a great base to develop the best tasting whiskeys and bourbons on the market.

For Manor Hill Brewing, Howard County’s first on-farm microbrewery, growing hops on their farm was a priority so that they could develop the best flavors for their beer. County residents come to the farm for tastings while they enjoy the beautiful setting of the farm.

PHOTOS COURTESY OF HOWARD COUNTY TOURISM & PROMOTION



TAP THE TRAIL!

The HowardOnTap craft beer trail is an experience like no other with fast and easy access to the burgeoning craft beer scene centered in Howard County, Maryland. Find all the necessary information on area breweries, brew pubs, ale houses, and more.

Visit all the Trail Stops and be awarded with an official HowardOnTap souvenir glass plus become eligible to win awesome prizes!

The HowardOnTap app tracks your progress and lets you know when you've completed the trail, or keep track on your own and redeem five or more receipts from participating locations for a pint glass. Once redeemed you can travel the trail again for another cool souvenir.

Integration with Facebook and Twitter makes sharing your journey easy and fun! You will also be the first to know what's happening at your favorite beer attractions with the On Tap and Events features.

Booking hotel rooms, rides with Uber or taxis, and even tours can be easily done using the Rooms, Rides & Tours feature. Travel the trail over time or all at once with participating tour and travel partners.

Learn more at howardontap.com

Black Flag Brewing Co.
blackflagbrewingco.com

Bulk Head Brewing Co.
bulkheadbrewingco.com

Jailbreak Brewing Co.
jailbreakbrewing.com
(443) 345-9699

Lost Ark Distilling Co.
lostarkdistilling.com
(443) 279-6178

Manor Hill Brewing
manorhillbrewing.com
(410) 997-7771

Tin Lizzie Wineworks
tinlizziewineworks.com
(301) 318-9954

Jail Break Brewing and Push Brewing Company are two more of Howard County's brewing companies. They are continually working with farmers to add new flavors to their beers and develop those products in demand.

New breweries coming to Howard County that are also looking at locally grown

products are Black Flag Brewing, Bulk Head Brewing and Hysteria Brewing Company.

Tin Lizzie Wineworks at Wayback Farm is "Maryland's premier 'Make Your Own Wine' facility." That's right, individuals from not only Howard County, but also from all around the State, have been traveling to Tin Lizzie's Wineworks since 2008 to "learn the secrets of creating their own world-class wines." Not only is it a creative activity for friends and families; businesses have found it to be a great team-building exercise. You choose the type of grapes you would like, the number of bottles that you would like to produce, and design your own label. Then you start the fun part, turning those grapes into wine. This process takes several steps done over a period of time and is a great way to try something new.

Everything we eat and drink eventually comes back to its agriculture roots, and both the breweries and the farming community is committed to supplying consumers with the best locally grown products. 🌾

HERE'S A FACT:

The top agricultural commodities in Howard County are corn, wheat, soybeans, turkeys and cattle.



FALL



Fall Fun on the FARM



AMANDA HOF

There is crispness in the air, the leaves are turning yellow, red and brown, and the smells of fall surround. Fall is a great time to visit farms and have fun, while learning about where your food comes from! There are so many exciting things to do on Howard County farms in the fall.

Activities abound in Howard County during the fall season, and our farms are no exception. September and October are a popular time for Howard County farms. Fall festivals, corn mazes, hayrides, pick-your-own pumpkins and apples are just a few of many family-friendly activities offered. Making memories as a family while out on the farm is something children may cherish for a lifetime.



Larriland Farm offers pick-your-own fruits for sale, a hay bale maze, and freshly made apple fritters. Clark's Elioak Farm provides children of all ages an opportunity to meet the farm animals at their petting farm while visiting the Enchanted Forest pine tree maze and visiting childhood fairy tale characters lovingly relocated and restored from the 1955 Enchanted Forest Theme Park that closed in the early 1990's.

Triadelphia Lake View Farm is a great place to pick pumpkins while taking a hayride out to the pumpkin patch, see cattle grazing and goats playing. Sharp's at Waterford Farm makes the environment come alive with hayrides and a corn maze. After a full morning or afternoon on the farm, what better way to end the day than a walk through the famous Mullinix Corn Maze! If horses are more to the liking, Days End Farm Horse Rescue hosts a fall festival for everyone to enjoy good food and meet the horses and learn about ways to help these loving creatures.

HERE'S A FACT:

Howard County is the only county in the United States with a farm that also displays objects from the original Enchanted Forest.



ERICA KAVIDAS

Clark's Elioak Farm



If you are looking for a festival that provides insight into the history of agriculture, stop by the Howard County Living Farm Heritage Museum during their annual Farm Heritage Days event in September and see live harvesting and blacksmith demonstrations plus watch the Maryland High School Rodeo. Environmental education experiences are plentiful at the Howard County Conservancy. Last, be sure to mark the calendar for Central Maryland Research and Education Center's Open House in October to learn more about what is happening today in agriculture, partake in hayrides around the farm and taste great locally produced food!

There is always something to do on the farm in the fall, so come one come all and make autumn memories to last a lifetime. 🍂

University of Maryland Central Maryland Research & Education Center
Extension.umd.edu/CMREC
(301) 627-8440

Clark's Elioak Farm
clarklandfarm.com
(410) 730-4049

Days End Horse Farm
defhr.org
(301) 854.5037

Larriland Farm
pickyourown.com
(410) 442-2605

Howard County Conservancy
hcconservancy.org
(410) 465-8877

Howard County Living Farm Heritage Museum
farmheritage.org
(410) 489-2345

Mullinix Corn Maze
mullinixcornmaze.com
(410) 245-6014

Sharp's at Waterford Farm
sharpfarm.com
(410) 489-2572

Triadelphia Lake View Farm
tlvtreefarm.com
(410) 489-4460

FALL RECIPE

PUMPKIN-APPLE SALAD

DIRECTIONS

Place the raisins in a small dish and cover with hot water. Let the raisins soak for 30 minutes. Once the raisins are plump, drain and place into a mixing bowl with the apple and pumpkin. Pour in the lemon juice and toss to coat. Season to taste with salt and pepper, serve right away.

INGREDIENTS

- 3 tablespoons raisins
- 2 tart apples, peeled and shredded
- 1 cup shredded pumpkin
- 2 teaspoons lemon juice
- salt and pepper to taste

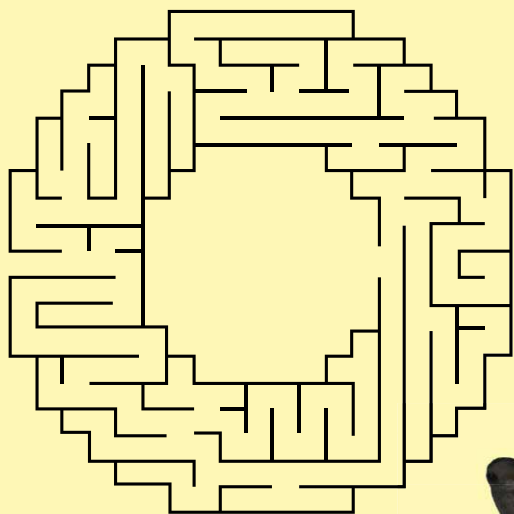


Down on the Farm



H N T T A Y J F T D
 Y O E A E C L V E E
 H T R K O A O C L O
 Q B R S C G H W G K
 I U B J E I U G I B
 T S M K C Q H D P S
 F H A K U M B C I H
 W X L F O A L W G E
 K C U D C N U Q O E
 G O O S E D H M F P

CALF	GOAT	PIGLET
CHICK	GOOSE	SHEEP
CHICKEN	HORSE	TURKEY
COW	KID	
DUCK	LAMB	
FOAL	PIG	



Who is Making that Sound?

MATCH EACH ANIMAL WITH ITS CORRECT SOUND

Cow	Bark
Sheep	Neigh
Pig	Moo
Horse	Meow
Dog	Oink
Cat	Baaa



Howard is for HORSES!

Exciting Steeplechases
Howard County Cup, Glenwood



www.mda.maryland.gov/horseboard



Howard County has always been a haven for horses, a place to ride & learn horsemanship, experience thrilling horse sports and enjoy scenic farms.



Champion Thoroughbreds
Chancecland Farm, West Friendship



Pony rides
Clarks Elioak Farm, Ellicott City

Visit our **Horse Discovery Centers** at Clark's Elioak Farm, Columbia Horse Center and Days End Farm Horse Rescue. **Take a trail ride** Patapsco Stables in Marriottsville. **Learn to ride & enjoy horses** at over 30 licensed lesson and boarding barns. **Experience horses up close & personal** at Howard County Fair's 7 days of horse shows, rodeos & draft horse & Western riding competitions, the Lisbon Horse Parade, and other events across the county.

Robert Keller



DEFHR

EQUINE RESCUE & EDUCATION FACILITY
IN HOWARD COUNTY, MARYLAND
1372 WOODBINE RD. WOODBINE, MD, 21797
(301)854-5037 • DEFHR.ORG

ADOPT.

94% OF
DEFHR HORSES
ARE ADOPTED



LEARN.

52,000+ PEOPLE
LEARN FROM
DEFHR ANNUALLY

ADOPT, LEARN & SERVE
IN THE HEART OF
HOWARD COUNTY, MD
WHERE
"HOWARD IS FOR HORSES"



SERVE.

DEFHR HAS
SERVED 2,100+
HORSES SINCE 1989





WINTER

Time for CSA Signup

The growing season is here, and everyone wants those locally grown fruits and vegetables. Where is fresh produce sold, besides a grocery store? Where are the farmers?

These are often the questions that are asked before a consumer starts investigating opportunities to purchase locally grown produce. Many times a consumer doesn't feel they have the time to run to a farmers market to pick up produce and then still have time to go to the grocery store. In today's busy world it can sometimes be hard for consumers to identify the many types of fruits and vegetables available for sale let alone find time to research recipes that incorporate produce into healthy meals.

Working with a farm that has a Consumer Supported Agriculture (CSA) program is a great opportunity. The consumer pays the farmer in the early spring for produce that they are just planting, and they will receive a weekly share of that produce for several weeks over the summer months in many cases. Some farms also have winter CSA's and fall CSA's if the consumer would like to expand eating local.

The best part of this is the farm will even provide recipes for produce that the consumer may not be as familiar with. The produce is also picked at the peak of ripeness, which is tastier and healthier for the consumer. Shares are typically picked up once a week and in some cases include breads, jams, eggs, cheese and meats.



HOWARD COUNTY TOURISM & PROMOTION

MAY	JUNE	JULY	AUGUST	SEPTEMBER	OCTOBER	NOVEMBER	DECEMBER
Asparagus		Okra, Black Eyed Peas		Sweet Potatoes, Pumpkins			
Spinach, Kale		Cantaloupes, Plums, Cider		Spinach, Kale			
Peas, Strawberries		Nectarines					
		Cabbage			Winter Squash		
Spring Mix	Cherries (sweet)		Eggplant, Blackberries				
	Beans (snap)				Pears, Apples		
	Raspberries (black & red)		Watermelons				
	Blueberries		Turnips/Parsnips				
		Beans, Squash (summer), Herbs					
		Tomatoes, Peaches					
		Corn (yellow & white)					
		Cucumbers, Beets					
		Potatoes, Blackberries, Raspberries (red)					
		Honey, Broccoli					

2016
**HARVEST
CALENDAR**

Prepared by The Howard County Economic Development Authority | www.hceda.org

2016 HOWARD COUNTY FARMERS' MARKETS

HOWARD COUNTY LIBRARY - MILLER BRANCH

9421 Frederick Road, Ellicott City

Wednesdays, May through November from 2:00 pm - 6:00 pm

www.HowardCountyFarmersMarkets.com

HOWARD COUNTY LIBRARY - EAST COLUMBIA BRANCH

6600 Cradlerock Way, Columbia

Thursdays, May through November from 2:00 pm to 6:00 pm

HOWARD COUNTY GENERAL HOSPITAL

5755 Cedar Lane, Columbia

Fridays, May through October from 11:30 am- 4:30 pm

www.HowardCountyFarmersMarkets.com

MAPLE LAWN CENTER

8191 Westside Blvd, Fulton

Saturdays, May through October from 9:00 am - 1:00 pm

www.HowardCountyFarmersMarkets.com

ELLICOTT CITY OLD TOWN MARKET

The Wine Bin & Little French Market, Old Ellicott City

Saturdays, May through October from 9:00 am - 1:00 pm

www.ellicottcityoldtownmarket.com

GLENWOOD COMMUNITY FARMERS' MARKET

Howard County Library - 2350 MD-97, Cooksville

Saturdays, May through October from 9:00 am - 1:00 pm

OAKLAND MILLS VILLAGE CENTER

5851 Robert Oliver Place, Columbia

Sundays, May through November from 9:00 am - 1:00 pm

www.HowardCountyFarmersMarkets.com

RIVER HILL FARMERS MARKET

River Hill Garden Center, 12165 Clarksville Pike

Saturdays, May through November from 9:00 am to 1:00 pm.

Riverhillfarmersmarket.org



WIC & Senior FMNP checks accepted at all markets.



PHOTOS BY KARMEN OSEI

By joining a CSA you are directly supporting a local farm or in some cases several farms. Howard County is fortunate to have several CSA programs. No matter how small or expansive your needs chances are there is a CSA for you.

Costs will vary as well as length of shares and pick-up options. Joining a CSA is also a great way to introduce new fruits and vegetables into your daily diet while learning about how your food is being grown. So try a CSA today!

Still not sure? Splitting a CSA with a friend or neighbor is a great way to try a CSA. 🌱

For more information go to hceda.org/farms-agriculture

HERE'S A FACT: There are **8 different Farmers Markets in Howard County that take place Wednesday—Sunday at various locations.**

WINTER RECIPE

FIVE-HERB ROASTED CARROTS AND POTATOES

INGREDIENTS

- Nonstick spray coating
- 3 pounds tiny new potatoes
- 2 medium carrots, peeled and cut into bite-size pieces
- 2 tablespoons snipped fresh chives
- 1 tablespoon snipped fresh oregano
- 1 tablespoon snipped fresh Italian parsley or regular parsley
- 2 teaspoons snipped fresh rosemary
- 1 teaspoon snipped fresh sage
- 3 cloves minced garlic (optional)
- 2 tablespoons butter, melted
- 2 tablespoons olive oil
- ½ teaspoon salt
- ¼ teaspoon freshly ground black pepper
- 4 fresh basil leaves, cut into thin slivers
- Fresh basil sprig (optional)

DIRECTIONS

1. Spray a 13x9x2-inch baking pan with nonstick coating and set aside. Scrub the unpeeled potatoes with a stiff brush. Cut into quarters. Place in prepared pan. Add the cut-up carrots.
2. In a small bowl, combine chives, oregano, parsley, rosemary, sage, garlic (if you like), butter, and oil. Drizzle mixture over the potatoes and carrots; toss. Sprinkle with salt and black pepper.
3. Cover with foil. Bake in a 400°F oven 30 minutes. Stir potatoes. Bake, uncovered, 15 to 20 minutes more or until potatoes are tender. Garnish with basil, if you like. Makes 6 to 8 servings



Mullinix Corn Maze

FAMILY OWNED & OPERATED SINCE 2010

10 Acres of Fun!

DON'T GET LOST UNTIL YOU GET HERE!



Open September 23rd
thru October 30th
Fridays 3pm-10pm
Saturdays & Sundays 10am-6pm

Admission: \$9 Kids under 3 are FREE
Last ticket sold one hour prior to closing

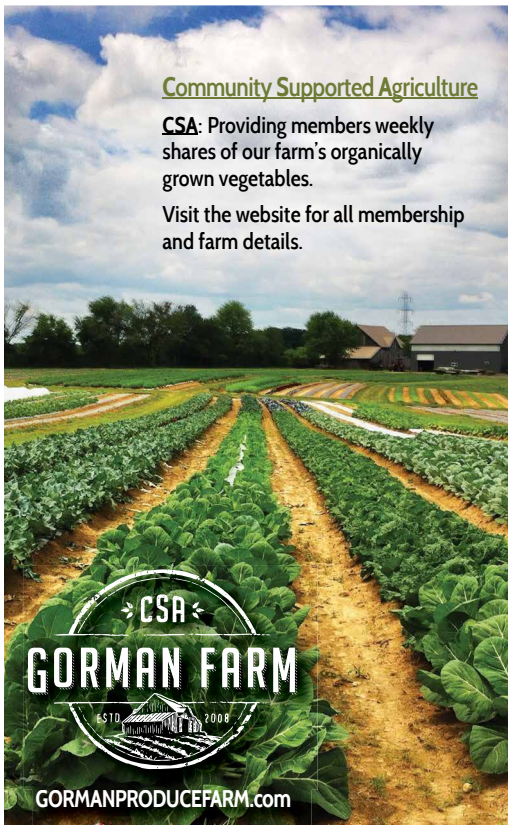
- Straw Maze • Corn Pit • Hay Rides • Food and Snacks
- Mums, Pumpkins, Apples & Apple Cider

Visit our website for directions and additional information mullinixcornmaze.com | 410.245.6014

Community Supported Agriculture

CSA: Providing members weekly shares of our farm's organically grown vegetables.

Visit the website for all membership and farm details.



GREENWAY
FARMS



14098 REPS ROAD, COOKSVILLE, MD 21723
15097 ROUTE 144, WOODBINE, MD 21797

410.442.2388

www.greenwaytrees.net



CHRISTMAS TREES
& POINSETTIAS



WINTER



Holidays on the Farm

Holidays and Food are synonymous for most. Whether planning recipes, cooking, or gathered around the table enjoying a meal with loved ones, the holidays somehow seem to revolve around a number of delicious meals. What is the best way to make your holiday dishes the best they can be? Easy. Use ingredients fresh from the farm.

Howard County is known for its diversity, and we celebrate it with a multitude of religions and holidays. With each holiday, there are traditional dishes that can utilize farm-fresh ingredients.

No matter the meal, there are farms in Howard County that can supply appropriate ingredients. Wagon Wheel Ranch, located in Mt. Airy, offers a variety of free-range beef, lamb, goat and pork. Likewise, Triadelphia Lake View Farm, Clark's Never Sell the Land Farm, Brendel's Farms, Inc., Hensing's Hilltop Acres and Carroll Farm-to-Table are all Howard County Farms offering a variety of home-grown meat products. There are a number of farms selling produce year round. Crops such as apples, potatoes, ginger and asparagus are all late fall crops that often can still be found in time

for the holidays. Other produce, such as berries, cherries, tomatoes, okra and beans, are all grown here in Howard County and are found throughout each of the various seasons. Many farms are able to extend the growing season with the use of high tunnels. Freezing and storing seasonal fruit and vegetables harvested earlier in the year is a great way to extend your options during the colder months.



HERE TO HELP...

Farmers and Landowners:
Soil Conservation Plans

Homeowners:
Sediment and Erosion Control

Teachers and Youth Organizations:
Educational Outreach

How can we help YOU?



14735 Frederick Road
Cookeville, Maryland 21723
410.313.0680 | www.howardscd.org



Sharp's at Waterford Farm



CREATE YOUR FARM FUN HERE!



410.489.2572 • sharpfarm.com



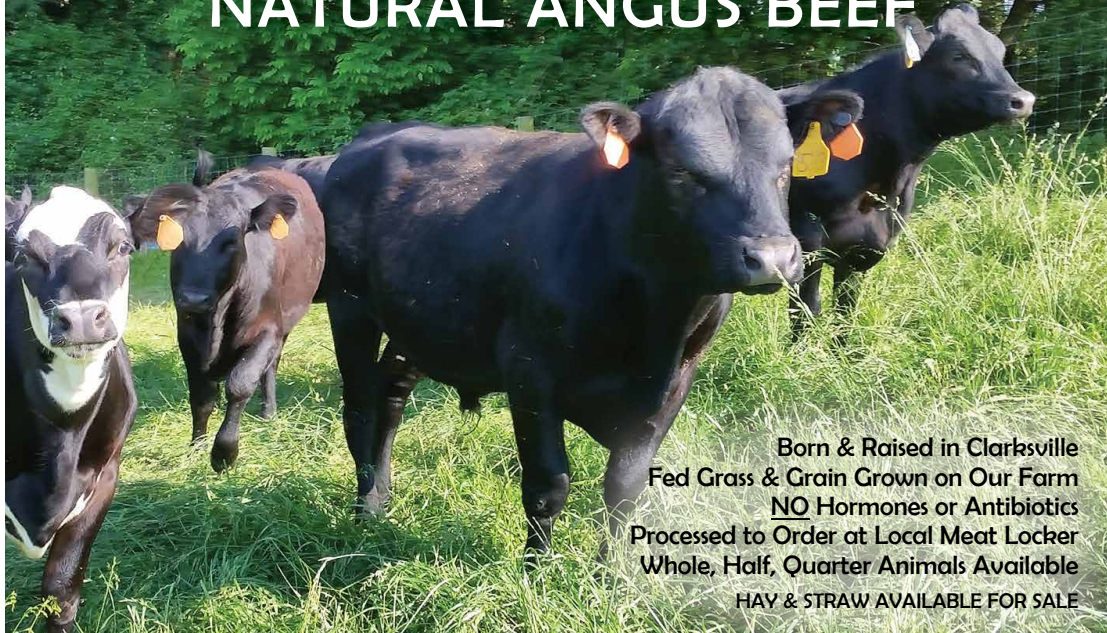
NOT JUST A TREE FARM...

- CSA • EDUCATIONAL FARM TOURS
- FARM FRESH MEATS • VEGETABLES/FRUITS
- FARMERS MARKET • PICK YOUR OWN PUMPKINS
- CUT YOUR OWN CHRISTMAS TREE
- WHOLESALE VEGETABLES

(410) 489-4460 | tlvtreefarm.com

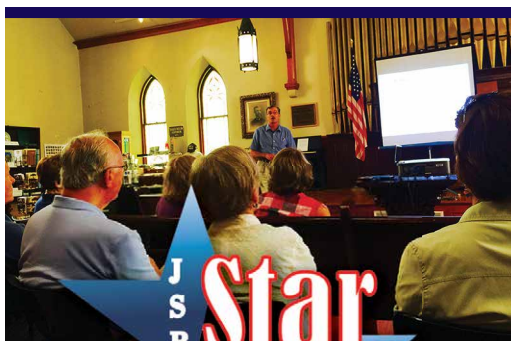
15155 Triadelphia Mill Rd., Glenelg, MD 21737

LIMESTONE VALLEY NATURAL ANGUS BEEF



Born & Raised in Clarksville
Fed Grass & Grain Grown on Our Farm
NO Hormones or Antibiotics
Processed to Order at Local Meat Locker
Whole, Half, Quarter Animals Available
HAY & STRAW AVAILABLE FOR SALE

For more information call 443-756-3311 or email mclark21029@aol.com



J
S
R
Star
Services

JSRSTAR (*Service That Attracts Recognition*)
is a multifaceted business whose
services include safety and emergency
action planning for farms and agro-
tourism operations. Contact us for
more information about these and the
other services provided by JSRSTAR.

410.988.8165 • info@jsrstar.com
www.JSRSTAR.com



LARRILAND FARM

PICK YOUR OWN
FARM MARKET

Berries, Fruits & Vegetables

CALL BEFORE COMING
410.442.2605 • 301.854.6110
2415 Woodbine Rd.,
Woodbine, MD 21797
www.pickyourown.com

Located in scenic western Howard County





HERE'S A FACT:

Howard County is the 2nd largest producer of turkeys in the state of Maryland.

If turkey is part of your holiday mealtime tradition, Howard County farms are a wonderful place to purchase fresh turkeys. Maple Lawn Farms, located in Fulton, are prominent for their Thanksgiving turkeys. There are multitudes of farms, such as Breezy Willow Farm, Gorman Farm, Larriland Farms, Love Dove Farms and Sharp's at

Waterford Farm, where you can purchase the produce for the perfect turkey dinner accompaniments. In addition to holiday staples and edibles, great gifts can be found at local farms such as Clark's Elioak Farm and Breezy Hill Alpaca Farm, whose gift shops are open year round and feature unique, hand-crafted and made-in-the USA products.

Howard County farms are available to help no matter what the holiday task. Triadelphia Lake View Tree Farm, located in Glenelg, as well as Greenway Farms, with locations in Cooksville and Woodbine, plant their own Christmas trees and sell them, as well as other holiday decorations, starting shortly after Thanksgiving through the month of December.

The Howard County Farm Bureau, a grassroots organization to promote and protect agricultural life in Howard County, also puts on the "Farmers Feed the Hungry Christmas Parade," featuring tractors and horses, during the month of December. The event, held in Lisbon, is free to the public and takes canned-food items to be donated to the Howard County and Carroll County Food Banks. Following the parade, there is a dinner held at the Lisbon Fire Department and a bonfire and Christmas village held across the street with vendors and music. The event is a fun night with friends and family, all helping to benefit a great cause! 🌱

Breezy Hill Alpacas
bhalpaca.com
(410) 489-5802

Breezy Willow Farm at Hopkins Spring
(410) 442-1807

Brendel Farms, Inc.
(410) 442-2101

Clark's Elioak Farm
(410) 730-4049
clarklandfarm.com

Clark's Never Sell the Land Farm
clarklandfarm.com
(410) 730-4049

Hensing's Hilltop Acres
hensingfarm.com
(704) 293-4126

Maple Lawn Farms
maplelawn.com
(301) 725-2074

Triadelphia Lake View Farm
tlvtreefarm.com
(410) 489-4460

WINTER RECIPE

ROASTED WINTER VEGETABLES

INGREDIENTS

- 1 pound carrots, peeled
- 1 pound parsnips, peeled
- 1 large sweet potato, peeled
- 1 small butternut squash, peeled and seeded (about 2 pounds)
- 3 tablespoons good olive oil
- 1 ½ teaspoons kosher salt
- 2 tablespoons chopped flat leaf parsley

DIRECTIONS

1. Preheat the oven to 425°F.
2. Cut the carrots, parsnips, sweet potato and butternut squash in 1 to 1 ¼ inch cubes. All the vegetables will shrink while baking, so don't cut them too small.
3. Place all the cut vegetables in a single layer on 2 baking sheets. Drizzle them with olive oil salt, and pepper. Toss well. Bake 25 to 35 minutes, until all the vegetables are tender, turning once with a metal spatula.
4. Sprinkle with parsley, season to taste, and serve hot.





SPRING



Cooking with Herbs

Whether you are just starting to use fresh herbs in your cooking or need a refresher, here are some tips to help lead you in the right direction.

Herbs come in various forms. The most common are fresh and dried. Examples of herbs include: basil, thyme, sage, rosemary, dill and oregano. Herbs are an easy way to add flavor without adding extra fat, sugar or sodium.

BUYING FRESH HERBS

It is best to buy herbs close to the time they will be used to maximize freshness and flavor. Look for herbs that are rich in color and aroma. They should not smell musty nor should they look wilted or discolored. This is not the time to take short cuts; freshness counts.

CLEANING OF YOUR HERBS

Always wash herbs before cooking or storing. Wash small amounts of herbs under cool running water or fill a clean sink or deep bowl with cool water. Place the herbs in the water and move them around to remove the dirt. Remove the herbs from the water; drain and change the water; repeat the process until the water is clear.

Remove clean herbs from water and either shake gently or lay on a dry paper towel and pat dry gently with another paper towel. Pressing too hard with the paper towel will bruise the herbs, and they will lose their flavor and will not last long.

STORING OF YOUR HERBS:

To extend the freshness, cut the stems diagonally and place the newly cut stems in a jar or tall glass with one to two inches of water. Cover the herbs with a plastic bag, leaving space for air to circulate. Never crush your herbs.

If herbs are for later use: chop, place in ice cube trays and fill each cube about 2/3 full. Pour virgin olive oil over them or melted butter. Cover tightly with plastic wrap and freeze. Remove the frozen cubes from the tray. Store in freezer containers or bags and remember to label what is in the container.

Why olive oil and not water? Olive oil will preserve the color and the taste of the herb better.

If short on time, chop the leaves, pack lightly in a plastic bag and freeze. For larger quantities, skip the chopping and freeze whole leaves. Spread them on a





SPRING

baking sheet lined with parchment paper and place in the freezer. When frozen, take the leaves off the parchment paper and put them into freezer bags. Why line the baking sheet? This is to prevent your herbs from picking up the metallic taste of the baking sheet and to also prevent the herbs from sticking to the baking sheet and being damaged. **TIP: Use frozen herbs as you would fresh when cooking.**

COOKING WITH FRESH HERBS

Cooking with fresh herbs is a great way to minimize the use of salt and add new flavor to your recipes. The general rule is to use 3 times the amount of fresh herbs to dry. So for example if your recipe needs one teaspoon of dried herb this would equal one tablespoon of fresh herbs. Caution, fresh (depending on the herb) can bring a stronger taste so start with half and add according to your taste. Remember: it is easier to add more to reach your ideal taste but you cannot take away if you add too much.

Recipes generally will tell you how to prepare your herbs such as mince, dice, chop, but remember: if you are new to cooking with fresh herbs, mincing releases more flavor than if you chop. So, if you are out for a mild flavor, chop instead of mincing. When to add fresh herbs to a recipe depends on the herb and the type of recipe you are using. **TIP: For hot dishes, fresh herbs are added near the end of the cooking time. For cold dishes, the herbs should be added several hours before serving or overnight.** 🌿

Common Herb and Food Combinations

Below is a guide designed to help those unfamiliar with using fresh herbs. Once familiar, trying your own combinations can be fun and is fully encouraged. Creating your own variations is what cooking is all about.

Basil – tomato products, eggs, game meat, rice, spaghetti, eggplant, water

Thyme – eggs, lamb, veal, rice, poultry

Rosemary – dumplings, eggs, veal, fish, potatoes, water

Oregano – tomato dishes, veal, spaghetti, eggplant

Dill – tomato dishes, coleslaw, fish, cauliflower, cucumber, summer squash

Sage – pork poultry, stuffing

Cilantro – Mexican and Asian cooking, rice, salsa, tomatoes

Mint – desserts, lamb, peas, fruit salads, sauces, water



SPRING

Carroll Farm-to-Table



PHOTOS BY KARMEN OBEI

Nutritionists, athletes, trainers, chefs and numerous celebrities have all raved about the Buy Local Movement. Chances are, by now you have also seen it mentioned in a magazine, newspaper, on the news or even on social media, with hash-tags like, “#buylocaeatfresh” or, “#supportlocalag.” The Buy Local movement has evolved into a modern day, pop culture fad, but it may just be a trend that is here to stay.

directly from the farmer allows an opportunity to build a relationship to the person growing your food, thus creating trust and confidence in the food you consume. Additionally, farmers can help you to find exactly the food that best meets individual wants and needs, and can provide additional information like how to properly store and cook food.

BUY LOCAL.

“Find the shortest, simplest way between the earth, the hands, and the mouth,” were the wise words of Italian aristocrat, Joseph del Vasto, and purchasing your goods directly from the farm down the road may just be the “simplest way” between these three means. Supporting farms in your community not only is beneficial to you, as a consumer, but it also ensures prosperity to both the farmer and the local economy.

On average, the produce in the grocery store travels about 1,800 miles by the time it reaches your shopping cart. Fruits and vegetables are at their peak nutritional value when they are ripe and ready to be harvested, and thus should be eaten shortly after being harvested. Buying fresh produce and protein directly from the farm can eliminate the need to purchase farm goods from the grocery store. Purchasing food



The process of visiting a farmer to purchase your food is an enriching experience for children. Type in “Kids think their food comes from the grocery store” into a Google search, and you will find over

55 billion results. Today, that is exactly what some children think: that their food comes from the supermarket. This is an excellent opportunity to educate children at home on where food comes from. Purchasing food directly from the farmer not only shows children where their food comes from, it helps them to understand the importance of eating fresh fruits and vegetables every day. Plus going to the farm is fun!

There are also economic factors that are important to the community. One of the biggest concerns about buying locally-raised products is the price. Keep in mind, however, where the where your money is going to. Purchasing goods either directly or indirectly



SPRING



COURTESY OF HCEDA

HERE'S A FACT:
There are 300 farms in Howard County.

from a local farm allows for the farm to generate income, and after time it allows the enterprise to be viable. More importantly, however, it allows the farmer to be visible—to other individuals, families or businesses throughout the community—and most importantly, over time this makes the farm a valuable asset to the community, and helps to ensure a future for both the farmer and his or her family. It is these three things—being viable, visible and valuable—that allow for a local business to strive and thrive.

Lastly, participating in the buy local movement, you are reinvesting your own earnings back into your community, helping the local economy to flourish. United States Secretary of Agriculture, Tom Vilsack, has said, "These type of local food systems are the cornerstones of our plans to revitalize

the rural economy," emphasizing the importance of the selling and purchasing of local goods to the local economy. Year after year, Howard County is recognized, both on state and national levels, for its booming economy. It is our 'booming economy'

that change helps to improve the values of our homes and the quality of our public education system. In order to help to continue these things, for the future of you and your family, participating in the buy local movement is a great way to do so.

Buying groceries directly from the farm is a great cause for the prosperity of the farmer, your local economy and you! Here in Howard County, there are so many different ways to support farmers, throughout each and every season. How many ways can you find in this magazine? 🌱

ASPARAGUS AS A SIDE DISH

DIRECTIONS

Combine the asparagus and water in a 10-inch skillet and place over medium heat, cover. Allow the asparagus to steam until tender, about 10 minutes, drain.

Reduce the heat to low and return the skillet to the heat. Drizzle olive oil over the asparagus and then sprinkle with Parmesan cheese. Add the grape tomatoes to the skillet and replace the lid.

Allow to sit covered until the cheese melts and the tomatoes are slightly steamed, approximately 2 minutes.

INGREDIENTS

- 1 bunch fresh asparagus, trimmed
- 2/3 cup water
- 1/2 cup grated Parmesan cheese
- 8 grape tomatoes, halved
- 1/4 cup olive oil

SPRING RECIPE



CRAZY STRAWBERRIES

DIRECTIONS

Mix balsamic vinegar, sugar, and black pepper together in a bowl. Add strawberries and stir to coat, marinate in refrigerator until chilled, about 10 minutes. Grate chocolate over top as a garnish.

INGREDIENTS

- 1/4 cup balsamic vinegar
- 2 pints fresh strawberries, hulled and quartered
- 2 tablespoons white sugar
- 1 teaspoon freshly ground black pepper
- 1 square unsweetened chocolate grated, or to taste

SPRING RECIPE





SPRING

Maryland Sheep & Wool Festival

“P ray for glorious springtime weather and a let-up in the gas shortage for Friday, April 26 and Saturday, April 27, 1974” were the words that appeared in the January 1974 issue of the Maryland Sheep Breeders Association (MSBA) Sheep News to announce the first-ever Sheep and Wool Crafts Festival in 1974 at the Carroll County Fairgrounds. Following the weekend, the event received recognition in The Shepherd, The Pennsylvania Farmer, The Cooperative Farmer and various other publications for being a “smashing success.”

What is today known as the Maryland Sheep and Wool

Festival began in 1974 as an event to offer public education, entertainment and a little profit for the MSBA as well. After six years, the Festival grew so rapidly that it needed to move to a larger site, which is when it moved to the Howard County Fairgrounds in 1980.

According to its website, the most striking thing about the history of the Maryland Sheep and Wool Festival is that it has been conducted for so many years “for one purpose and one purpose only—the promotion of lamb and wool and the education of sheep producers and the general public about sheep and sheep products.” They also dedicate their success to the tremendous number of volunteers who have donated countless hours toward the success of the event.

The 2016 event marked the 43rd annual Maryland Sheep and Wool Festival. The event is held the first weekend in May at the Howard County Fairgrounds and is still sponsored by the MSBA. The festival chairman, Gwen Handler, specifies that the festival is “farmers, shepherds, spinners, knitters, dyers, artists, chefs, animal lovers, entrepreneurs, educators, parents, men and women of culture around the world, all with a reason to appreciate sheep.”

Festival events are classified as contests and competitions, demos,



shows and sales, entertainment, shepherd workshops, fiber arts workshops and family activities. Popular festival attractions include the sheep dog demonstrations, the sheep-to-shawl contest, the wonderful food and the nearly 300 vendors.

Another noteworthy feature of the Festival is their new design every year. Each year, the cover of the catalog boasts new artwork chosen from artists’ submissions. The chosen design adorns a whole new set of Festival merchandise available for the public to purchase. These are truly ‘collectable items’ as they are only offered one year over two days.

To this day the festival remains free of admission. 🌱

For more information, visit www.sheepandwool.org.





WAGON WHEEL RANCH

We sell our free range, drug free, naturally raised beef, lamb, pork, goat, chicken, duck and turkeys raised right here in Howard County to health food stores like Whole Foods Market, David's Natural Market and Mom's Organic Market

If you want to buy in bulk,
WE SELL DIRECT TO YOU!

Visit our website for more information.



661 West Watersville Rd., Mount Airy, MD 21771 • Hours: 9-5 Monday-Friday 9-2 Saturday

WAGONWHEELRANCH.ORG

443.257.5098 | 443.271.6850



Farm and Home Service has everything you could need for your lawn, garden & farm with 6 convenient locations in Maryland to serve you. Family owned and operated.

**One Stop Service - Lawn & Garden/Pet Food & Supplies/
Southern States Products - Delivery Available**



7625 Main Street
Sykesville, MD 21784
(410) 795-1234

9064 Frederick Road
Ellicott City, MD 21042
(410) 465-0930

23000 Davis Mill Road
Germantown, MD 20876
(301) 916-8147

1 Commerce Street
Taneytown, MD 21043
(410) 756-6711

16315 Old River Road
Poolesville, MD 20837
(301) 948-5372

630 Souder Road
Brunswick, MD 21716
(301) 834-7141

www.farmandhomeservice.com

Like Us on Facebook

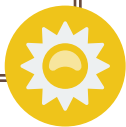
FRANK'S GARAGE



We service most types of lawn & garden equipment, select service for automobiles, truck trailers, farm tractors & equipment, welding & other repairs. Pick up & delivery available. Celebrating over 73 years of service.



410.241.0695 or 410.531.2569
info@franksgarage.biz
11761 Triadelphia Rd, Ellicott City, MD
www.franksgarage.biz



SUMMER

Fresh

Local

Meals Made Easy



The Roving Radish, managed by Howard County's Office of Community Sustainability, promotes healthy eating while also creating sustainable markets for local and regional farms. The Roving Radish achieves this mission by selling affordable, healthy meal kits with much of the protein, produce and spices sourced from local and regional farms. Each meal kit includes two recipes and ingredients to prepare two dinners for a family of four. Ingredients are washed, chopped, measured and prepared as much as possible in advance, in order to make preparing healthy meals as simple as possible.

Meals kits can be ordered online for a single week or many weeks at a time. Kits can then be picked up on a specific day at any of the nine designated

locations throughout the County. Delivery locations are selected for ease of access and the needs of the community. Kits including two meals are \$28, and are offered at a reduced cost for eligible individuals. There is no minimal



For more information or to order a Roving Radish Meal Kit go to www.rovingradish.com

COURTESY OF HOWARD COUNTY GOVERNMENT



commitment when ordering meals, allowing individuals to pick and choose preferred weeks and recipes.

The season opens late-May and runs through November. Recipes are pre-planned around each growing season in order to provide notice to farmers of the produce and the protein needed, giving farmers a reliable source for selling their products. County Executive Allan H. Kittleman decided to make the Roving Radish, which had been a pilot program, a permanent program to create another secure market for local and regional farms, helping to support local agriculture.

Roving Radish recipes are as healthy as the ingredients are fresh. Each recipe selected uses nutrition guidelines and has no more than 750 calories, less than 30 percent of calories coming from fat and no more than 1050 mg of sodium.

The Roving Radish is sponsored by Howard County Government, the Horizon Foundation, the Howard County Public School System, United Way of Central Maryland and Howard County General Hospital. 🌱

HERE'S A FACT:

More than half of the farmland in Howard County is used for crop production.

TOMATO AND GOAT CHEESE TART

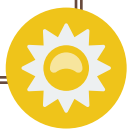
INGREDIENTS

- 1 package frozen puff pastry (2 Sheets)
- 1 egg yolk
- 1 teaspoon water
- 1 cup finely shredded or grated Asiago or Parmigiano-Reggiano cheese
- 2 4½ ounce tub goat cheese, softened
- 2 cloves garlic, minced
- 1 tablespoon snipped fresh lemon thyme or thyme or 1 teaspoon dried thyme, crushed
- 2 pounds assorted heirloom tomatoes, cut into ¼ inch thick slices
- 2 tablespoons olive oil
- ¼ cup snipped fresh basil or flat-leaf parsley

DIRECTIONS

1. Thaw the pastry sheets at room temperature for 1 hour.
2. For tart shells, in a small bowl, mix egg yolk with water. Set aside. Unfold the pastry sheets on a lightly floured surface. Roll gently to flatten creases (you should have a 10-inch square). Cut ½ inch strips from all 4 sides of each pastry sheet. Brush the edges of the pastry sheets with the egg mixture. Place the cut strips on top and along edges of the pastry sheets, gently pressing in place to form a raised edge; trim ends. Place pastries on 2 parchment paper-lined baking sheets. Brush pastries with egg mixture. Prick pastry with a fork. Sprinkle with Asiago cheese. Bake, 1 sheet at a time, in a 425°F oven for 15 to 20 minutes or until puffed and golden brown. Cool on baking sheets on wire racks.
3. In a small bowl stir together goat cheese, garlic, and the thyme. Spread over bottom of tart shells.
4. Arrange tomato slices on top of the goat cheese mixture, overlapping slightly. Drizzle with 2 tablespoons olive oil. Sprinkle with basil. Slide onto cutting board or serving platter, cut each tart into serving-size pieces.





SUMMER



Howard County Restaurant Weeks

NOT JUST FOR FOODIES

With the hustle and bustle of the work week and activity-filled calendars, it can be hard to find time to try something different when it comes to dining out. Howard County Restaurant Weeks happens twice a year in July and January and is a celebration of locally inspired fresh, innovative chefs' creations.

Howard County Restaurant Weeks events typically features upwards of twenty participating restaurants with 15 days to partake, giving dining enthusiasts from near and far plenty of time to savor Howard County's local flavor. Each restaurant offers a prix fixe chef's menu that can range anywhere from \$10.00 to \$45.00. Restaurants will feature locally sourced ingredients in their menus whenever possible to include produce, meats, game, seafood, dairy, herbs, baked goods, wine, craft beer and even spirits.

Vinnie Rege, Chair of Howard Community College's Center for Hospitality & Culinary Studies, says "Restaurant Weeks provides a tremendous opportunity for people throughout Maryland who love fresh, innovative food to discover new restaurants and return to their favorites."

Amanda Hof, Community Development Director for Howard County Tourism & Promotion, adds, "From urban foodies to suburban families, Howard County's diverse dining scene has something to love for every taste and budget, especially during Restaurant Weeks."

The summer version of Howard County Restaurant Weeks kicks off with the Howard County Film 'Feast'ival, held at Clark's Elioak Farm usually on the third Tuesday in July. The event is a joint effort between the Agricultural Marketing Program of the



CENTRE PARK GRILL

FROM THE FARMER'S MARKET...



FRESH TO YOUR TABLE...



8808 Centre Park Dr. Rt 108: Ellicott City / Columbia
(410) 997-0050 • www.CentreParkGrill.com



ALL NATURAL, ALL HANDMADE, EVERY BIT OF IT, EVERY TIME. WE WOULDN'T SETTLE FOR ANYTHING LESS. AUTHENTIC AMERICAN ICE CREAM & ICE CREAM SANDWICHES IN FLAVORS YOU CAN'T WAIT TO TRY!

Check out our schedule, and stop by for single serve cups, ice cream sandwiches, and pints of handmade goodness:

Market at River Hill Garden Center: Saturdays 9am-1pm
12165 Clarksville Pike Clarksville, MD 21029

Howard County Farmers Market Miller Library
9421 Frederick Rd, Ellicott City, MD 21042
Wednesday's 2-6 PM

Clark's Elioak Farm at the Petting Farm,
Saturday & Sunday's 11am-3pm

www.SCOOPANDPADDLE.com

SIGN UP NOW FOR OUR SUMMER/FALL CSA!



Buy Local & Eat Healthy
Each Week Through
Breezy Willow Farm's
Community Supported
Agriculture!

Sign up now online for Breezy Willow Farm's 2016 Value-Added Summer/Fall CSA, and receive goodies weekly, June - November!

Breezy Willow Farm links with local farms & small businesses to provide our customers the widest variety of farm-fresh goodies!

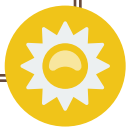
You will receive between 10 & 11 items weekly: An assortment of 8 fruits & veggies, a dozen cage-free natural eggs & your choice of premium bread baked for us using freshly milled flour by Great Harvest or The Bredery.

On-Farm Store open every Saturday, 10am-2pm!
Local pasture raised meat & eggs, honey, cheese, fruits, butters, soaps, & more.

Breezy Willow Farm
Howard County, Maryland
410-442-1807 | www.breezywillowfarm.com



Growing Methods:
Certified Organic,
Natural, & IPM



Film 'Feast'ival



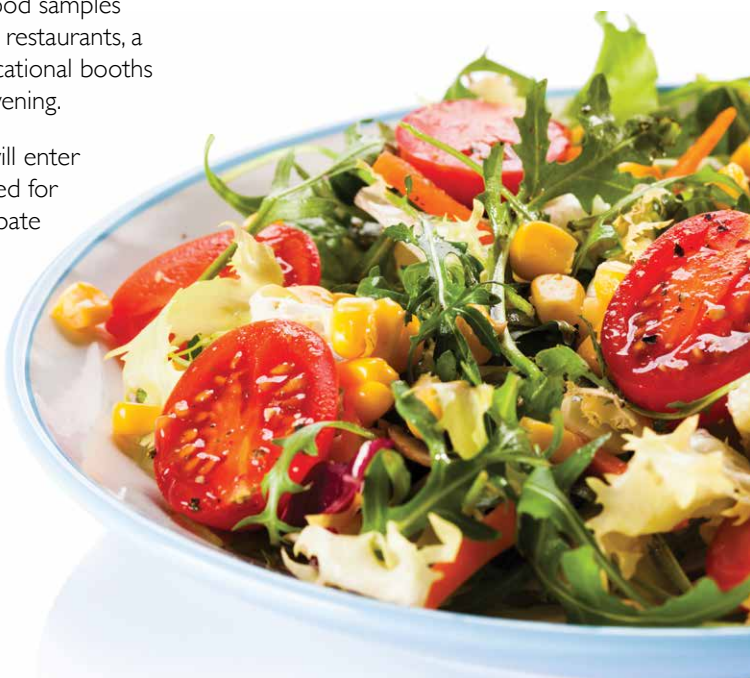
Film 'Feast'ival

HERE'S A FACT:
Fewer than half of the farmers in Howard County list farming as their primary occupation. This means that most farmers have another job in addition to farming.

Howard County Economic Development Authority, Howard County Tourism & Promotion, Clark's Elioak Farm and the University of Maryland Extension and also kicks off the Maryland Buy Local Challenge. Hence the name 'Feast'ival'. This free, up-beat event encompasses live music, remarks from elected officials, an assortment of savory, farm-fresh food samples prepared by favorite Howard County restaurants, a mini farmers market, a variety of educational booths and a featured film to wrap up the evening.

Howard County Restaurant Weeks will enter its 10th year in 2017. It is fully expected for more restaurants than ever to participate in the 2016 summer event and 2017 winter event. So whether you are foodie or just someone who likes food, you won't want to miss this culinary phenomenon. 🌱

.....
For dates and more information visit Howardcountyrestaurantweek.com



I made it & I love it!



Make your own world-class

wine

at Tin Lizzie Wineworks in
Clarksville, MD

TIN LIZZIE
wineworks

For more information: Call 301-318-9954
Email dave@tinlizziewineworks.com
Visit www.tinlizziewineworks.com



HENSING FARM

We sell home-raised, pastured meats. We believe that healthy animals provide healthy food for healthy people! We are a small farm and live on 3.5 acres in Dayton, MD

CURRENTLY FOR SALE:

Raw Milk Labeled & Sold as Pet Milk
Pastured meat and Eggs, non-GMO

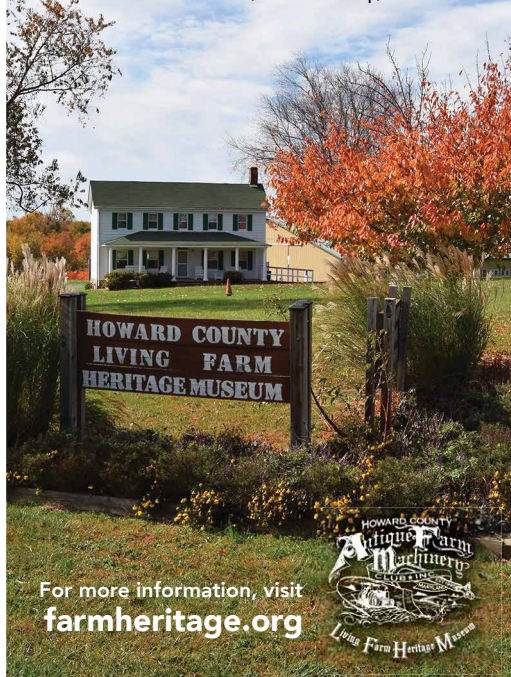
Contact us for a farm tour or if you are interested in purchasing our products.

704.293.4126 | kelly@hensingfarm.com

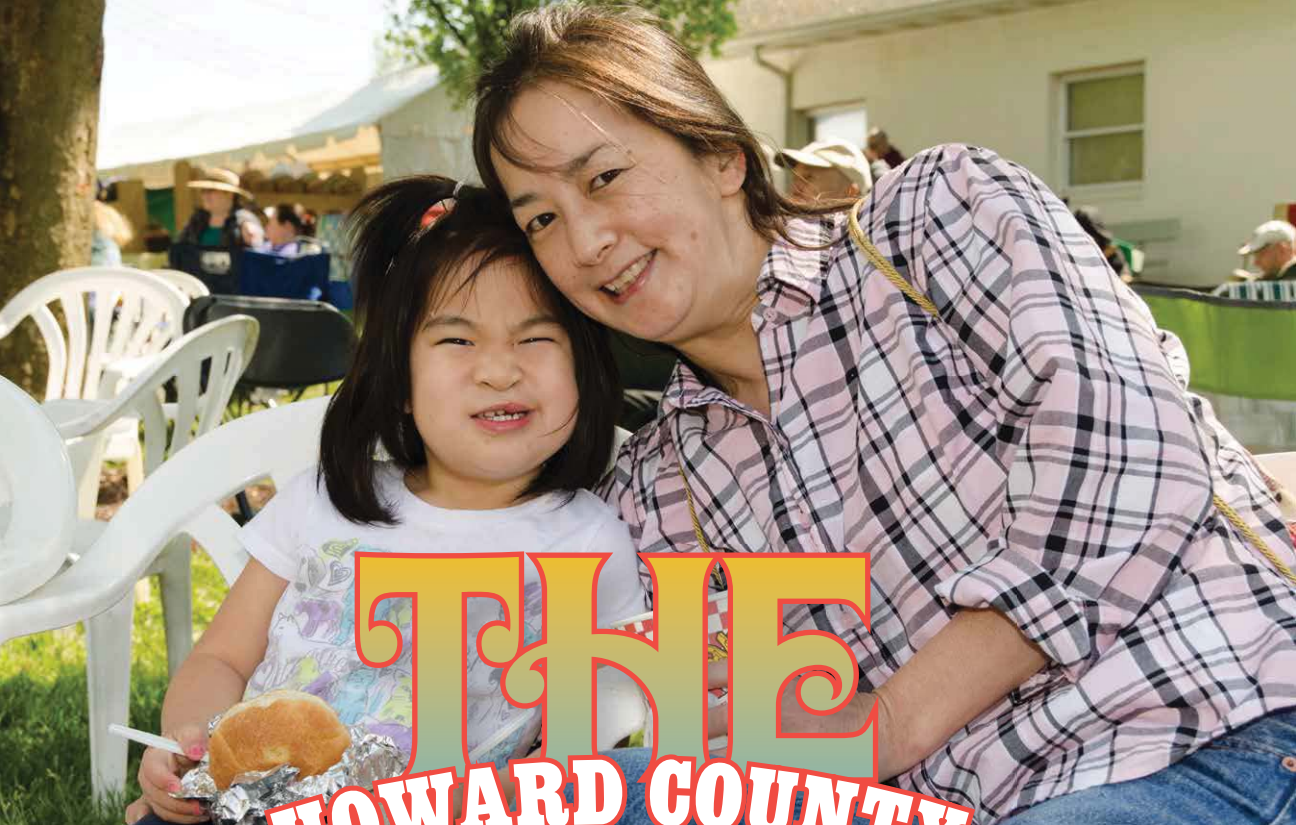
www.hensingfarm.com

Find Howard County's **BEST KEPT SECRET**

at 12985 Frederick Road, West Friendship, MD 21794



For more information, visit
farmheritage.org



THE HOWARD COUNTY FAIR

A CELEBRATION OF HERITAGE

Funnel cakes, deep-fried Oreos, amusement rides and animals: there is only one thing these items have in common: they are all found at the Howard County Fair!

The Howard County Fair, which takes place the first full week of August, is packed with fun, education, heritage and of course hard-to-resist, delicious fair food.

Whether it be French fries from the Glenelg High School Boosters, deep-fried Oreos from the Marriotts Ridge High School Boosters, ice cream from the Glenwood Lions Club and even

lemonade, corndogs and cotton candy from various other food vendors, the fair is sure to fill the most adventurous of appetites.

After grabbing a bite to eat, there are many different attractions to visit. The entertainment stage has a number of events for adults and children of all ages, including magic shows, square dancing and live concerts. Furthermore, there are ticketed events such as a combine derby, demolition derby and even professional bull riding, held in the contest arena located behind the show arena. These live, thrilling events

are action packed and are definitely worth the few extra pennies for the family to enjoy.

There are also a number of contests that are equally as fun to watch as they are to compete in. Events such as the pie eating contest, pretty animal contest and cow milking contest provide smiles for everyone and are open for anyone to participate in.

On the other hand, some popular contests to watch are the Miss Howard County Farm Bureau, Future Howard County Farmer and Little

CARL SCHMITT, FEDERAL HILL PHOTOGRAPHY



SUMMER



CARL SCHMITT, FEDERAL HILL PHOTOGRAPHY



Miss Howard County Farm Bureau contests, as well as the Iron Chef competition, taking place Thursday afternoon in the 4-H Hall. This annual event held at the fair invites the public to watch various teams put their creativity and culinary skills to the test.

Each year, 3-4 teams are given farm-fresh ingredients, donated by local, Howard County farms, to create their best meal for a collection of expert judges during the Iron Chef competition. In previous years, teams have included groups of restaurants, 4-H clubs and in 2015, "Dads with kids." Ingredients provided consist of a main dish of some sort of protein (meat), as well as a number of fruits, vegetables and spices for teams to incorporate into their meals. Teams and dishes are evaluated for best presentation, best teamwork, best meat dish, best vegetable dish and an overall winner.

Also fun to watch are the number of livestock shows that take place throughout the week, where 4-H'ers get the opportunity to exhibit the hard work they put into raising their animals. Aside from 4-H animals, there is also the opportunity for children to see and pet baby animals of all sorts in the "Kids & Critters" barn.

In addition to all the food, live entertainment and animals, the fair exhibits county residents' skills and talents. Indoor entries, ranging from quilts, jams, jellies, baked goods, crafts, painting, drawing and even Lego creations, are among a multitude of categories that are judged for prizes.

When the heat starts to become too much outside, fairgoers can escape to the air-conditioned Main Exhibition Hall, where one can find compelling exhibits from local organizations as well as goods and services for sale.

Lastly, a trip to the fair is not complete without a swirl on an amusement ride favorite: whether its classic ferris wheel or the thrilling fireball or funky fun house, it will be an amusing experience.

All these events are packed into just one week, occurring just once a year—so make sure you plan your visit before it's too late! It is a fair-tastic time for all! 🌱

.....
For more information go to howardcountyfair.org

HERE'S A FACT:

There are over 20 different 4-H clubs in Howard County for youth between 5-18 to participate in.

PLEASE CHECK WEBSITES
TO CONFIRM DATES

- ▶ **Clark's Elioak Farm**
clarklandfarm.com
- ▶ **Sharp's at Waterford Farm**
sharpfarm.com
- ▶ **Howard County Living Farm Heritage Museum**
farmheritage.org
- ▶ **TLV Tree Farm**
tlvtreefarm.com
- ▶ **Greenway Farms**
greenwaytrees.net
- ▶ **Days End Farm Horse Rescue**
defhr.org
- ▶ **The Therapeutic & Recreational Riding Center, Inc.**
trrcmd.org



A YEAR OF FUN

on the farm

AUGUST

- 6-13 Howard County Fair**
Howard County Fairgrounds
- 13-14 Enchanted Forest 61st Birthday Party & Book Signing**
Clark's Elioak Farm
- 14 Second Saturday Creekside**
Sharp's at Waterford Farm
- 20-21 Gem Mining & Geode Cracking Weekend**
Clark's Elioak Farm
- 27-28 Gem Mining & Geode Cracking Weekend**
Clark's Elioak Farm

SEPTEMBER

- 3-5 Labor Day Weekend**
Clark's Elioak Farm

- 10 Brice Ridgely Memorial Fun Day**
Howard County Living Farm Heritage Museum
- 10-11 Grandparents Weekend**
Clark's Elioak Farm
- 13 26th Annual TRRC Golf Classic**
The Therapeutic & Recreational Center, Inc
- 16 Kick Off-Kick Back Celebration**
Days End Farm Horse Rescue
- 17 Pumpkin Patch Opens**
Clark's Elioak Farm
- 17 Fall Festival**
Days End Farm Horse Rescue
- 17-18 Farm-City Celebration Weekend**
Clark's Elioak Farm
- 17-18 Fall Festival**
Larriland Farm

- 17-Oct. 2 Howard County Farm-City Celebration**
- 21 Preserving Fall's Bounty**
University of Maryland Extension
Howard County Office
- 24-25 21st Annual Farm Heritage Days**
Howard County Living Farm Heritage Museum
- 24-25 Pumpkin Coloring and Craft Activities Weekend**
Clark's Elioak Farm
- 24-25 Fall Festival**
Larriland Farm
- 24-25 Fall Opening**
Sharp's at Waterford Farm
- 25 Fall Festival**
Howard County Conservancy
at Mt. Pleasant Farm
- 27 Howard County Farm Bureau Farm-to-Table Dinner**
Circle D Farm



Howard Co Living Farm Heritage Museum

OCTOBER

- 1 Iron Bridge Hounds**
Sharp's at Waterford Farm
- 1 Meet the 4-H'ers**
TLV Tree Farm
- 1-2 Teddy Bear Farm Visit**
Clark's Elioak Farm
- 1-2 Fall Festival**
Larriland Farm
- 1-2 Pumpkins*Pumpkins*Pumpkins**
Sharp's at Waterford Farm
- 3 Open House-Day in the Life of a Farmer**
Sharp's at Waterford Farm



8 Threshing Bee

Howard County Living Farm
Heritage Museum

8 Iron Bridge Hounds

Sharp's at Waterford Farm

8 University of Maryland College of Agriculture and Natural Resources Open House

CMREC-Clarksville Facility

8-9 Gem Mining & Geode Cracking Weekend

Clark's Elioak Farm

8-9 Fall Harvest

Sharp's at Waterford Farm

12 Open House-Day in the Life of a Farmer

Sharp's at Waterford Farm

15-16 Gem Mining & Geode Cracking Weekend

Clark's Elioak Farm

15-16 A-Maze-ing Corn Maze

Sharp's at Waterford Farm

22-23 Pumpkins, Pumpkins, Pumpkins!

Clark's Elioak Farm

22-23 Harvest Days

Sharp's at Waterford Farm

23 Kiddie Hayride

Howard County Living Farm
Heritage Museum

29 Biketoberfest

Howard County Living Farm
Heritage Museum

29 Basket & Bag Bingo

Howard County Living Farm
Heritage Museum

29-30 Halloween and Gem Mining Weekend

Clark's Elioak Farm

29-30 Fall on the Farm

Sharp's at Waterford Farm

30 Kiddie Hayride

Howard County Living Farm
Heritage Museum

31 Open House-Harvest Celebration

Sharp's at Waterford Farm

NOVEMBER

6 Pumpkin Patch Closes

Clark's Elioak Farm

5-6 Pumpkin Chucking Weekend

Clark's Elioak Farm

5-6 Last Weekend

Sharp's at Waterford Farm

8 Open House-Pilgrim History & Hayride

Sharp's at Waterford Farm

19-Mar 25 Castle Store Open for Meat Sales—SATURDAY ONLY

Clark's Elioak Farm

25 Open for Christmas Trees

Greenway Farms & TLV Tree Farm

DECEMBER

3-4 Holiday Open House

Howard County Living Farm
Heritage Museum

10 Holiday Party

Days End Farm Horse Rescue

10-11 Holiday Open House

Howard County Living Farm
Heritage Museum

17 3rd Annual Tree Lighting Ceremony

Howard County Living Farm
Heritage Museum

JAN. / FEB. / MARCH

Central Maryland Women in
Agriculture Forum

APRIL

1-2 Petting Zoo Opens

Clark's Elioak Farm

8-9 Enchanted Forest Cherrybration Days

Clark's Elioak Farm

15-17 Egg Hunt Weekend

Clark's Elioak Farm

17 Open House-Spring is Growing

Sharp's at Waterford Farm

18 Greenhouse Opens

Sharp's at Waterford Farm

22-23 Trusty the Tractor Weekend

Clark's Elioak Farm

29-30 Spring Craft Weekend

Clark's Elioak Farm

MAY

6-7 Teddy Bear Farm Visit

Clark's Elioak Farm

13 Second Saturday Farmer

Sharp's at Waterford Farm

13-14 Mother's Day Weekend

Clark's Elioak Farm

14 Alternative Mother's Day

Sharp's at Waterford Farm

19 Open House Spring is Growing

Sharp's at Waterford Farm

20-21 Horse Discovery Center Special Weekend

Clark's Elioak Farm

27-29 Honor Our Veterans Weekend

Clark's Elioak Farm

JUNE

10 Second Saturday Farmer

Sharp's at Waterford Farm

17-18 Fathers Day Weekend

Clark's Elioak Farm

23 Open House-Ponds, Puddles, & Creeks

Sharp's at Waterford Farm

JULY

8 Second Saturday Farmer

Sharp's at Waterford Farm

14 Open House-Wonderful World of Worms

Sharp's at Waterford Farm

18 Howard County Film 'Feast'ival

Clark's Elioak Farm

28 Open House-Ponds, Puddles, & Creeks

Sharp's at Waterford Farm



COURTESY OF HOWARD COUNTY ECONOMIC DEVELOPMENT

HOWARD COUNTY Farms

Airview Farm

1878 Woodbine Road
Woodbine, MD 21797

AlpacaJoy of Maryland

6854 South Maria Avenue
Highland, MD 20777

Annodate Farm

3274 Jones Road
Woodbine, MD 21797

Bonafide Stables

2751 McKendree Road
Glenwood, MD 21738

Bowling Green Farm, Inc.

1465 Underwood Road
Sykesville, MD 21784

Bowling Green Farm-Cheese

1475 Underwood Road
Sykesville, MD 21784

Breezy Hill Farm-Alpacas

2820 Woodbine Road
Woodbine, MD 21797

Breezy Willow Farm at Hopkins Spring

15307 Frederick Road
Woodbine, MD 21797

Brendel Farms, Inc.

15298 Union Chapel Road
Woodbine, MD 21797

Carroll Farm-To-Table

Manor Lane and
Frederick Road
Ellicott City, MD 21042

Chanceland Farm

1975 McKendree Road
West Friendship, MD 21794

Chapel View Farm

2640 Jennings
Chapel Road
Woodbine, MD 21797

Circle D Farm

15535 Carrs Mill Road
Woodbine, MD 21797

Clark's Elioak Farm

10500 State Route
108 (Clarksville Pike)
Ellicott City, MD 21042

Clark's Never Sell the Land Farm

10500 State Route 108
Ellicott City, MD 21042

Clark's Produce Stand

4370 Centennial Lane
Ellicott City, MD 21042

Dawn Acres Angus

13155 Frederick Road
West Friendship, MD 21794

Day View Acres

1950 Mt. View Road
Marriottsville, MD 21104

Days End Farm Horse Rescue

1372 Woodbine Road
Woodbine, MD 21797

Down on the Farm

465 Morgan Station Road
Woodbine, MD 21797

Evergreen Stables Farm LLC

8250 Old Columbia Road
Fulton, MD 20759

Falcon Ridge Farm

4496 Jennings
Chapel Road
Brookeville, MD 20830

First Choice Farm

2698 Jennings
Chapel Road
Woodbine, MD 21797

Forever Spring Farm

6800 White Rock Road
Sykesville, MD 21784

Frank's Produce

6686 Old Waterloo Road
Elkridge, MD 21075

Gentle Giants Draft Horse Rescue

925 Lady Anne Court
Mount Airy, MD 21771

Gorman Farm

10151 Gorman Road
Laurel, MD 20723

Greenway Farm

14098 Repps Road
Cooksville, MD 21723

Greenway Farm

15097 Frederick Road
Woodbine, MD 21797

Hensing's Hilltop Acres

14204 Triadelphia Mill Road
Dayton, MD 21036

Heritage Hill Farm

2790 Florence Road
Woodbine, MD 21797

Hickory Ridge Farm

13032 Highland Road
Highland, MD 20777

Jumping Ahead Acres

5171 Talbots Landing
Ellicott City, MD 21043

Just This Side of Paradise Farm

15240 Frederick Road
Woodbine, MD 21797

Kimberthy Turf Farm

3425 Hipsley Mill Road
Woodbine, MD 21797

Knott-E-Knuff Farm

1485 Old Annapolis Road
Woodbine, MD 21797

L-Meadow Farm

1521 St. Michaels Road
Woodbine, MD 21797

Larriland Farm

2415 Woodbine Road
Woodbine, MD 21797

Limestone Valley Farm, Inc.

5450 Sheppard Lane
Clarksville, MD 21029



Love Dove Farm

14834 Old Fredrick Road
Woodbine, MD 21797

Majestic Meadows Farm

2405 Pfefferkorn Road
West Friendship, MD 21794

Manor Hill Farm & Brewing

4411 Manor Lane
Ellicott City, MD 21042

Maple Dell Farm

1960 Daisy Road
Woodbine, MD 21797

Maple Lawn Farms

11788 Route 216
(Scaggsville Road)
Fulton, MD 20759

Marama Farm

5610 Chamblis Drive
Clarksville, MD 21723

Maura Cahill & Jan Luigard

14607 Riggs Meadow Drive
Cooksville, MD 21723

Merry Acres Farm

3807 Walt Ann Drive
Ellicott City, MD 21042

Misty Meadows Farm

2031 Millers Mill Road
Cooksville, MD 21723

Howard County Agriculture Services

Alice's AgriMaryland

1485 Old Annapolis Road
Woodbine, MD 21797

Animal Medical Hospital at Glenwood, Inc.

2465 Route 97, Suite 7
Glenwood, MD 21738

Frank's Garage

11761 Triadelphia Road
Ellicott City, MD 21042

Howard County Fair Association, Inc.

2210 Fairgrounds Road
West Friendship, MD 21794

Howard County Living Farm Heritage Museum

12985 Frederick Road
West Friendship, MD 21794

Howard Soil Conservation District

14735 Frederick Road
Cooksville, MD 21723

J. David Mullinix & Sons, Inc.

14420 Howard Road
Dayton, MD 21036

Level Land, Inc.

P.O. Box 100
Lisbon, MD 21765

Level Landscape, LLC

15298 Union Chapel Road
Woodbine, MD 21797

Maryland Tack Inc.

1457 Fannie Dorsey Road
Sykesville, MD 21784

Mid-Atlantic Farm Credit

700 Corporate Center
Court, Suite L
Westminster, MD 21157

The Rough Country Home Studio

1485 Old Annapolis Road
Woodbine, MD 21797

University of Maryland Extension-Howard

3300 North Ridge
Road, Suite 240
Ellicott City, MD 21043

Wagner's Meats LLC

602-604 North
Main Street
Mount Airy, MD 21771

PHOTO COURTESY OF HOWARD COUNTY TOURISM & PROMOTION

HERE'S A FACT:

Howard County has more horses per acre than any other county in the United States.

Papa's Produce at Restoration Acres

1815 Woodbine Road
Woodbine, MD 21797

Pleasant Prospect Farm

4389 Jennings Chapel Road
Brookeville, MD 20833

Rhine Landscaping

12885 Old Frederick Road
Sykesville, MD 21784

Run of the Mill Farm

6901 Eden Mill Road
Woodbine, MD 21797

Rural Rhythm Farm

13817 Howard Road
Dayton, MD 21036

Shadow Mere Farm

1841 Marriottsville Road
Marriottsville, MD 21104

Sharp's at Waterford Farm

4003 Jennings Chapel Road
Brookeville, MD 20833

Slade Farm

13200 Greenberry Lane
Clarksville, MD 21029

Wayback Farm

13240 Greenberry Lane
Clarksville, MD 21104

Spring Meadow Farm

2125 Route 97
Cooksville, MD 21723

Spring Mill Farm

14120 Rover Mill Road
West Friendship, MD 21794

Stewart Farms

3400 Jennings Chapel Road
Woodbine, MD 21797

Stonebrook Farm

6300 Guilford Road
Clarksville, MD 21029

Summer Hill Farm

14195 Route 144
West Friendship, MD 21794

Sun Nurseries

14790 Bushy Park Road
Woodbine, MD 21797

Tara Equestrian Center

2640 Jennings Chapel Road
Woodbine, MD 21797

Therapeutic & Recreational Riding Center

3750 Shady Lane
Glenwood, MD 21738

Timber Falls Tree & Beef Farm

17794 Old Frederick Road
Mount Airy, MD 21771

Triadelphia Lake View Farm

15155 Triadelphia Mill Road
Glenelg, MD 21737

Walnut Springs Nursery

14812 Burntwoods Road
Glenwood, MD 21738

Tin Lizzie Wineworks at Wayback Farm

13240 Greenberry Lane
Clarksville, MD 21104

Woodcamp Farm

17403 Hardy Road
Mount Airy, MD 21777



HOWARD COUNTY TOURISM & PROMOTION

"What A Real Pet Store Should Be & More"

TODAY'S PET

Specializing in the area's **LARGEST Selection of... LOVING PUPPIES & KITTENS FOR SALE & ADOPTION!**

Puppies and kittens are available for sale from qualified breeders. You may also place an existing pet or adopt a new pet from our adoption center or through www.todayspet.com

Over 50 brands of quality, natural & holistic dog foods.



(443) 878-1920

Gateway Overlook Rt 108 & 175 (Next to Costco)



A Today's Pet is tomorrow's best friend

vr Growth and Learning Center



Brenda von Rautenkranz
M.S., NCC, EAGALA Certified
Psychotherapist

Equine Assisted Psychotherapy

Specializes in Children and Adolescents

Individual/Couples/ Family

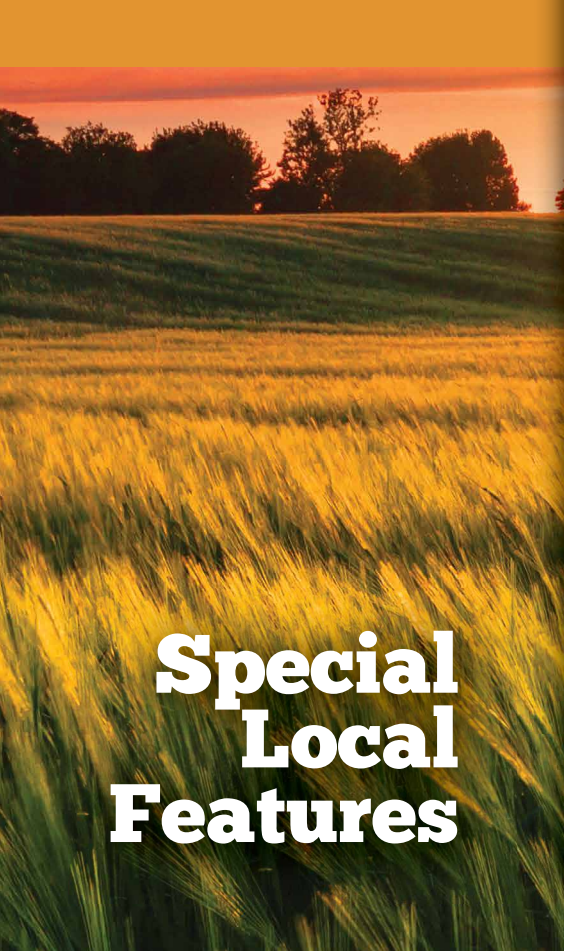
Equine Assisted Psychotherapy provides a hands-on approach

Equine Corporate Teambuilding Center is an innovative and experiential program offered to corporations and other businesses that wish to improve various skills in their teams. Our program uses team-building exercises with our horses and facilitators to develop leadership, communication, personal growth, corporate culture, and positive team development.

brendavonr@aol.com • 301.641.0031

Visit our website for more information

vrtherapycenter.com



Special Local Features

PASSPORT PROGRAM



When planning your visits be sure to have participating farms stamp the Passport Portion of their guide listing. Collect a stamp from 6 or more farms and be rewarded with a Harvest-Howard County reusable shopping bag filled with offers from participating farms and advertisers in this guide. Redeem your stamped farm listings at the Howard County Welcome Center in Old Ellicott City located at 8267 Main Street, Ellicott City, Maryland 21043. For more information stop in the Howard County Welcome Center in Old Ellicott City or call 410-313-1900 or go to VisitHowardCounty.com/Outdoors/Farms

PARTICIPATING FARMS:

Breezy Hill Alpaca Farm.....	40	Larriland Farm	42
Breezy Willow Farm at Hopkins Spring	40	Manor Hill Brewing	42
Clark's Elioak Farm.....	41	Pizza Harvest.....	43
Hensing Farm, LLC.....	41	Sharp's at Waterford Farm.....	43
Howard County Conservancy.....	42	Triadelphia Lake View Farm.....	43
Howard County Living Farm Heritage Museum	42	Wagon Wheel Ranch	43



BREEZY HILL ALPACA FARM

2820 WOODBINE ROAD, WOODBINE
410.489.5802
bhalpaca.com

Experience: the curious and gentle nature of our animals: alpaca, sheep, goats, and feathered friends

Touch: their luxurious fleeces, enjoy feeding them – you may get your first alpaca kiss!

Learn: about these incredible animals, what we do with their fiber and the benefits of our farming lifestyle

Shop: our onsite boutique; many items made from eco-friendly alpaca and other exotic fleeces - hypoallergenic and so soft!

See our website for general hours and tours.

40 **harvest**



BREEZY WILLOW FARM AT HOPKINS SPRING

15307 FREDERICK ROAD, WOODBINE
410.442.1807
breezywillowfarm.com

Buy Local & Eat Healthy Each Week Through Breezy Willow Farm's Community Supported Agriculture!

We link with local farms & small businesses to provide our customers the widest variety of farm-fresh goodies!

You will receive between 10 & 11 items weekly: An assortment of 8 fruits & veggies, a dozen cage-free natural eggs & your choice of premium bread baked for us using freshly milled flour by Great Harvest or The Breadery.

Visit our year-round farm store. Seasonal hours on website.



CLARK'S ELIOAK FARM

10500 CLARKSVILLE PIKE, ELLICOTT CITY
410.730.4049
clarklandfarm.com

Visit our friendly animals--goats, sheep, cows, pigs, ponies, bunnies, an emu & more. Enjoy a hayride & pony ride. Explore the nursery rhyme & fairy tale attractions from the Enchanted Forest. Our family has been farming here since 1797 and wants to share our 100% grassfed beef, pasture-raised eggs, lamb & pork with you. Visit our Castle Store year-round, our Summer Roadside Produce Stand & our Pumpkin Patch in the Fall. A perfect place for birthday parties and educational tours.

Visit our website for seasonal hours.



GORMAN FARM

10151 GORMAN RD, LAUREL/COLUMBIA
301.908.8063
gormanproducefarm.com

Community Supported Agriculture

CSA:

Providing members weekly shares of our farm's organically grown vegetables.

Visit the website for all membership and farm details.



GREENWAY FARMS

14098 REPS ROAD, COOKSVILLE
15097 ROUTE 144, WOODBINE
410.442.2388
greenwaytrees.net

We offer a selection of cut-your-own Christmas trees, including blue spruce, Norway spruce, white spruce, Canaan fir and Douglas fir trees, all grown at our Christmas tree farms in Howard County. We also have fresh-cut Fraser fir and Douglas fir for your convenience.

We sell beautiful poinsettias raised in our greenhouses, fresh wreaths and pine roping for decorating, and locally made crafts in our Christmas shop. There is a train display at both locations, plus plenty of hot cocoa and hot cider!



HENSING FARM, LLC

14204 TRIADELPHIA MILL ROAD, DAYTON
704.293.4126
hensingfarm.com
kelly@hensingfarm.com

We are a small, family farm in Dayton. While we love visitors, we ask that you call or email to plan a visit to the farm. For Passport Stamps, please come find us at the Wednesday Miller Library farmers market in Ellicott City, 2-6pm. Also on Saturdays at the River Hill Garden Center farmers market in Clarksville, 9am-1pm.

We proudly raise:

Raw Milk from our Jersey cows, labeled & sold as pet milk
Pastured, Soy-Free, Non-GMO meats & eggs
Please see our website for more information



HOWARD COUNTY CONSERVANCY

10520 OLD FREDERICK RD, WOODSTOCK
410.465.8877
hconservancy.org

The Howard County Conservancy is a non-profit environmental education and preservation organization. The Conservancy offers a variety of activities for children and adults throughout the year at our 232-acre Mt. Pleasant farm in Woodstock and at Howard County's Belmont Manor and Historic Park in Elkridge. Visitors to Mt. Pleasant farm will enjoy our interactive nature center, four miles of trails, demonstration gardens and a collection of historic farmstead buildings. Visit www.hconservancy.org for further information.



HOWARD COUNTY LIVING FARM HERITAGE MUSEUM

12985 FREDERICK RD, WEST FRIENDSHIP
410.489.2345
farmheritage.org

We are a non-profit organization with over 6 miles of nature trails throughout our property. There are approximately 400 acres of rolling hills, meadows and woodland. The perfect setting to host family outings, parties, weddings and other private events.

Please visit our website to learn more about Howard County's Living Farm Heritage Museum and the many programs and exciting activities that continue to educate and preserve the agricultural way of life.



LARRILAND FARM

2415 WOODBINE ROAD, WOODBINE
410.442.2605 | 301.854.6110
pickyourown.com

Larriland Farm strives to provide the most delicious fruits, vegetables and berries at their peak of ripeness on our **Pick-Your-Own** farm. There's nothing better than sun-kissed fruits and berries picked right off the plant! We grow Pick-Your-Own Strawberries, Raspberries, Blueberries, Plums, Peaches, Blackberries, Apples, Pumpkins, Spinach, Beets, Turnips, Broccoli, Kale, Tomatoes and more!

We also sell freshly picked produce and yummy wholesome snacks in our **Big Red Barn Market**. **Hayrides** are offered in the fall.



MANOR HILL BREWING

4411 MANOR LANE, ELLICOTT CITY
410.997.7771
manorhillbrewing.com

Manor Hill is located on the Marriner Family farm in Ellicott City. Join us in our tap room for samples and full pours of our draft offerings. Walk around the brewery, meet and greet some of our staff and brewers, or just enjoy the farm scenery. After sampling a few beers on site, you can fill a growler or buy some cans to go. Reservations are free, but highly recommended since we are only allowed to have 50 visitors at a time. When full you can try our beer at Victoria Gastro Pub and Manor Hill Tavern as well. Please visit our website to make a reservation today.



PIZZA HARVEST

4979 SHEPPARD LANE, ELLICOTT CITY
410.849.4314
pizzaharvest.com

Amish-built carriages will transport you through our 160-acre farmstead to experience both traditional and modern farming techniques. Connect your family to farm life, humanely-raised cattle, pigs, chickens and ducks, an 18th-century spring house, and a modern solar well. Learn how our sustainable practices are building soil, retaining water, preventing erosion and growing healthy food on pizza-inspired pasture.

Find out more about our planned Pizza Harvest retail space. Bring a picnic and don't forget to pick up pasture-raised eggs and meat at our Welcome Center.



SHARP'S AT WATERFORD FARM

4003 JENNINGS CHAPEL RD, BROOKEVILLE
410.489.2572
sharpfarm.com

Visit Sharp's at Waterford Farm, a 530 acre working farm located in the western part of Howard County, family-owned and operated since 1903. We offer activities for children of all ages and adult guests during the spring, summer and fall. Highlights include educational farm tours, hayrides, greenhouse plants, a fall pumpkin patch and corn maze, and custom parties.

Check out our website for more details and seasonal hours.



TRIADELPHIA LAKE VIEW FARM

15155 TRIADELPHIA MILL ROAD, GLENELG
410.489.4460
tlvtreefarm.com

At TLV (Triadelphia Lake View Farm) we believe in treating our patrons like one of the family. Our farm has been in our family for over 100 years. That is why we provide high-quality products at reasonable prices. Everyone on our staff is committed to ensuring that your visit with us is a success! At Triadelphia Lake View Farm the customer always comes first.

Check out our educational farm tours, farm fresh meats, vegetables/fruits, farmers market, pick your own pumpkins, cut-your-own christmas tree, wholesale vegetables.

See our website for hours.



WAGON WHEEL RANCH

661 WEST WATERSVILLE RD., MOUNT AIRY
443.257.5098 | 443.271.6850
wagonwheelranch.org

We sell our free-range, drug-free, naturally-raised beef, lamb, pork, goat, chicken, duck and turkeys raised right here in Howard County to health food stores like Whole Foods Market, David's Natural Market and Mom's Organic Market

If you want to buy in bulk, WE SELL DIRECT TO YOU!

Visit our website, wagonwheelranch.org for more information.

Hours: 9-5 Monday-Friday, 9-2 Saturday



SCHEDULE OF EVENTS:

**Howard County Farm-City Celebration
September 17 to October 2, 2016**

Farmland Forever...Building Healthy Families

Howard County farms have been producing food and fiber for more than 200 years. Today, you can still taste a crisp, fresh-picked apple, touch a newborn calf and enjoy a beautiful drive through the County's rural west to see autumn in its brightest hues.

Howard County is known for its diversity, and we celebrate it with the multitude of religions and holidays. With each holiday, there are traditional dishes that can utilize farm-fresh ingredients.

Fall is the perfect time to celebrate the County's strong agricultural heritage and to promote the mutual benefits farmers and their "city cousins" share. The Howard County Farm-City Celebration is 16 days of fun for families, learning experiences for kids of all ages, and an opportunity to appreciate the contributions our farms make to the quality of life for all Howard County residents.

From September 17 to October 2, farms are opening their doors to visitors and holding Fall Harvest Festivals. Special programs are scheduled in the schools and at library branches. And, don't miss visiting Farm Heritage Days, Sept. 24-25, across from Howard County Fairgrounds (12985 Frederick Road, West Friendship).

This following is your guide to all the events scheduled during this unique celebration.

Please come join us and enjoy!

Saturday, September 17

9:00 am – 1:00 pm
Historic Ellicott City Old Town Market
The Wine Bin & Little French Market, Old Ellicott City
www.ellicottcityoldtownmarket.com

9:00 am – 1:00 pm
Howard County Farmers Market
Maple Lawn Center
8191 Westside Blvd., Fulton
www.HowardCountyFarmersMarket.com

9:00 am – 1:00 pm
Glenwood Community Farmers Market
Howard County Library – Glenwood Branch
2350 MD-97, Cooksville

9:00 am – 5:00 pm
Pick Your Own Apples, Vegetables, Pumpkins, Apple Fritters Hayrides, Straw Maze, and Boo Barn (Ages 3-7)
Larriland Farm
www.pickyourown.com

10:00 am – 5:00 pm
Farm-City Celebration Weekend
Get a jump start on Howard County's Farm-City Celebration by joining us Saturday and Sunday for our Pumpkin Patch opening. Come get your pumpkins, play in our Enchanted Pine Tree Forest, enjoy facepainting and all our great rides!! GEM MINING, too. Enjoy some Scoop & Paddle Ice Cream, CJ's Pit Beef and fresh local cider.
Clark's Elioak Farm **1**
www.clarklandfarm.com

10:15 am
All Together Now
All Ages
Stories, songs, and activities for children and adults to enjoy together.
Howard County Library-Central Branch
www.hclibrary.org

10:30 am – 12:30 pm
Ask a Master Gardener
Discuss Gardening questions
Howard County Library-Miller Branch
www.hclibrary.org

11:00 am – 4:00 pm
Fall Festival
Admission is \$2 for adults; \$1 for children under 18, and children under 5 are free! A fun family day in the country! The day's highlight will be a contest with the horses in costume, pony rides for the kids, a band on the front lawn for all to enjoy, and lots of great local vendors! Days End Farm Horse Rescue **2**
www.defhr.org

11:30 am
All Together Now
All Ages
Stories, songs, and activities for children and adults to enjoy together.
Howard County Library-Central Branch
www.hclibrary.org

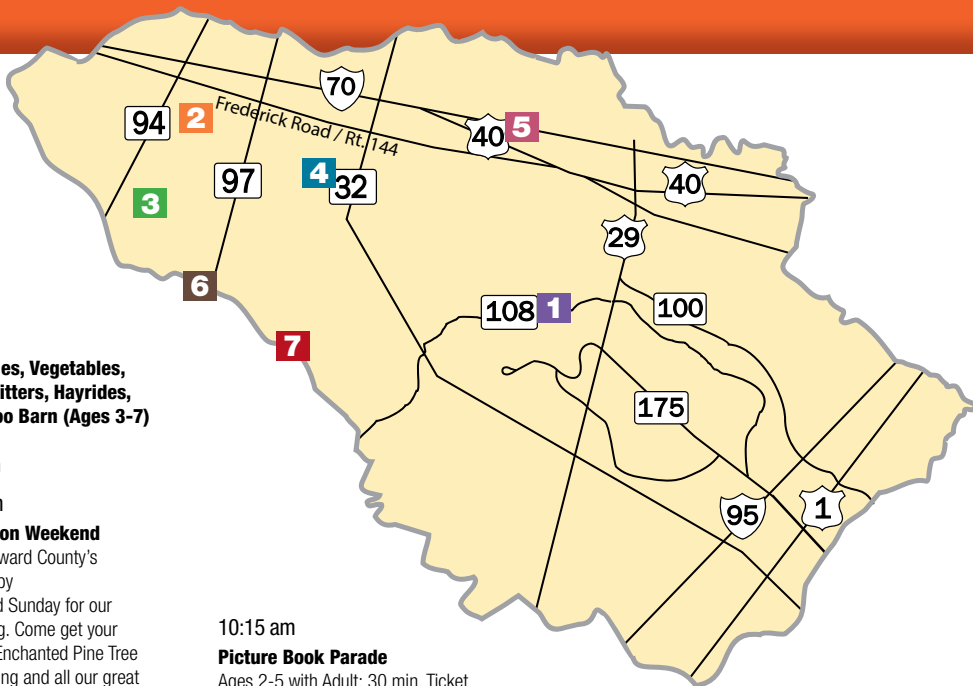
Sunday, September 18

9:00 am – 1:00 pm
Howard County Farmers Market
Oakland Mills Village Center
5851 Robert Oliver Place, Columbia
www.HowardCountyFarmersMarkets.com

MISSION STATEMENT

THE MISSION of the Howard County Farm-City Celebration is to provide opportunities for interaction between urban citizens and farmers in Howard County. This celebration highlights our farm-city interdependence and promotes understanding and appreciation between people on either side of the imaginary boundary separating town from country.

Please note some activities may require a fee and/or parental supervision. Some activities may be cancelled due to inclement weather. All Events are subject to change. Please check the websites for the most up to date information.



9:00 am – 5:00 pm
Pick Your Own Apples, Vegetables, Pumpkins, Apple Fritters, Hayrides, Straw Maze, and Boo Barn (Ages 3-7)
 Larriland Farm **4**
www.pickyourown.com

10:00 am – 5:00 pm
Farm-City Celebration Weekend
 Get a jump start on Howard County's Farm-City Celebration by joining us Saturday and Sunday for our Pumpkin Patch opening. Come get your pumpkins, play in our Enchanted Pine Tree Forest, enjoy facepainting and all our great rides!! GEM MINING, too. Enjoy some Scoop & Paddle Ice Cream, CJ's Pit Beef and fresh local cider.
 Clark's Elioak Farm **1**
www.clarklandfarm.com

Monday, September 19

10:00 am - 5:00 pm
Petting Farm, Pumpkin Patch & Enchanted Pine Tree Forest
 Clark's Elioak Farm **1**
www.clarklandfarm.com

10:00 am - 12:00 pm
The Bounty of Fall Produce
 Learn proper techniques to preserve fall produce. Reservations Required.
 University of Maryland Extension-Howard County
www.howardcounty.umd.edu

10:15 am
3, 2, FUN!
 Ages 2-3 with Adult; 30 min. Stories, songs and activities. Ticket required.
 Howard County Library – Savage Branch
www.hclibrary.org

10:15 am
Picture Book Parade
 Ages 2-5 with Adult; 30 min. Ticket Required. Tales, tunes and tons of fun!
 Howard County Library – Central Branch
www.hclibrary.org

10:30 am
Little Blue Truck on the Farm
 Ages 2-5 with Adult; 30 min. Registration Required Ready for a ride? Beep along with Little Blue! Beep! Beep! Make a little blue truck and collect some farm animals along the way.
 Howard County Library – Glenwood Branch
www.hclibrary.org

11:30 am
Picture Book Parade
 Ages 2-5 with Adult; 30 min. Ticket required. Tales, tunes and tons of fun!
 Howard County Library – Central Branch
www.hclibrary.org

4:30 pm
Green Fingers Garden Club
 Ages 6-8 60 min. Registration Required and Signed Release Form Required for each session. Take part in the science and art of gardening.
 Howard County Library – Miller Branch
www.hclibrary.org

6:30 pm
Play Partners
 Ages infant-23months with adult; 20-30 min. Ticket required. Stories, baby games, and musical activities.
 Howard County Library-Central Branch
 Howard County Library- Savage Branch
www.hclibrary.org

7:00 pm
Pajama Time
 All Ages; 30 min. Stories and Music Just Before Bedtime. Pajamas, Teddy Bears, and Blankets welcome. Ticket required.
 Howard County Library – Miller Branch
www.hclibrary.org

7:00 – 8:30 pm
Ask a Master Gardener
 Discuss gardening questions
 Howard County Library-Miller Branch
www.hclibrary.org

Tuesday, September 20

8:30 am
County Executive Job Exchange
 Sharp's at Waterford Farm **6**
www.sharpfarm.com

9:00 am – 6:00 pm
Pick Your Own Apples, Vegetables, and Pumpkins
 Larriland Farm **3**
www.pickyourown.com

10:00 am – 5:00 pm
Petting Farm, Pumpkin Patch & Enchanted Pine Tree Forest
 Clark's Elioak Farm **1**
www.clarklandfarm.com

10:15 am
Play Partners
 Ages infant-23months with adult; 20-30 min; Ticket required. Stories, baby games, and musical activities.
 Howard County Library – Central Branch
www.hclibrary.org

11:30 am
Play Partners
 Ages infant-23months with adult; 20-30 min; Ticket required. Stories, baby games, and musical activities.
 Howard County Library – Central Branch
www.hclibrary.org

COURTESY OF HCEDA



Tuesday, September 20 (continued)

2:00 pm

Just for Me

Ages 3-5; 30 min; Ticket required.

For children who are ready for an independent class that includes creative expression, listening comprehension, and early reading skills.

Howard County Library-Miller Branch

www.hclibrary.org

7:00 pm

Pajama Time

All Ages; 30 min.

Stories and Music Just Before Bedtime.

Pajamas, Teddy Bears, and Blankets welcome. Ticket required.

Howard County Library – Savage Branch

www.hclibrary.org

Wednesday, September 21

9:00 am – 6:00 pm

Pick Your Own Apples, Vegetables, and Pumpkins

Larriland Farm **3**

www.pickyourown.com

10:00 am – 12:00 pm

Preserving Falls Bounty;

Registration required.

University of Maryland Extension

– Howard County Office

<http://extension.umd.edu/howard-county>

10:00 am – 5:00 pm

Petting Farm, Pumpkin Patch & Enchanted Pine Tree Forest

Clark's Elioak Farm **1**

www.clarklandfarm.com

10:15 am

Play Partners

Ages infant-23 months with adult;

20-30 min. Ticket required.

Stories, Baby Games, and Musical Activities.

Howard County Library – Savage Branch

www.hclibrary.org

10:30 am

Little Blue Truck on the Farm

Ages 2-5 with adult; 30 min.

Registration required.

Ready for a ride? Beep along with Little Blue!

Beep! Beep! Make a little blue truck and collect some farm animals along the way.

Howard County Library – Glenwood Branch

www.hclibrary.org

10:15 am

Farm City

Ages 2-5 with an adult; 30 min.

Ticket required. Stories and songs that celebrate the farm-city connection.

Howard County Library – Central Branch

www.hclibrary.org



KARMEN OSEI

11:30 am

Play Partners

Ages infant-23 months with adult;

20-30 min. Ticket required.

Stories, Baby Games, and Musical Activities.

Howard County Library – Savage Branch

www.hclibrary.org

11:30 am

Farm City

Ages 2-5 with an adult; 30 min.

Ticket required. Stories and songs that celebrate the farm-city connection.

Howard County Library – Central Branch

www.hclibrary.org

2 pm – 6 pm

Howard County Farmers Market

Howard County Library – Miller Branch

9421 Frederick Road, Ellicott City

www.HowardCountyFarmersMarkets.com

Thursday, September 22

9:00 am – 6:00 pm

Pick Your Own Apples, Vegetables, and Pumpkins

Larriland Farm **3**

www.pickyourown.com

10:00 am – 5:00 pm

Petting Farm, Pumpkin Patch & Enchanted Pine Tree Forest

Clark's Elioak Farm **1**

www.clarklandfarm.com

10:15 am

Just For Me

Ages 3-5, Ready for an

Independent Class; 30 min.

For children who are ready for an independent class that includes creative expression, listening comprehension, and early reading skills. Ticket required.

Howard County Library – Savage Branch

www.hclibrary.org

10:30 am

Butterfingers

Ages 2-5 with adult; 20 min. Make fresh butter, then sample it with a cracker. Ticket required.

Howard County Library – Glenwood Branch

www.hclibrary.org

2 pm – 6 pm

East Columbia Farmers Market

Howard County Library – East Columbia Branch

6600 Cradlerock Way, Columbia

7:00 pm

Pajama Time

All Ages; 30 min. Stories and Music Just

Before Bedtime. Pajamas, Teddy Bears,

and Blankets welcome. Ticket required.

Howard County Library – Central Branch

www.hclibrary.org

7:00 pm – 8:00 pm

Better Yield Through Better Soils

Grow healthy and productive vegetables

by tending to your soil. Kent Phillips will

explain the importance of soil tests, how to

interpret soil test results, and how to amend

soil with nutrients and organic material.

Howard County Library – Miller Branch

www.hclibrary.org

Friday, September 23

9:00 am – 6:00 pm

Pick Your Own Apples, Vegetables, and Pumpkins

Larriland Farm **3**

www.pickyourown.com

10:00 am – 5:00 pm

Petting Farm, Pumpkin Patch & Enchanted Pine Tree Forest

Clark's Elioak Farm **1**

www.clarklandfarm.com

10:15 am

Play Partners

Ages infant-23 months with adult; 20-

30 min; Ticket required. Stories, baby

games, and musical activities.

Howard County Library – Central Branch

www.hclibrary.org

10:30 am

Picture Book Parade

Ages 2-5 (2-yr.-olds must be accompanied

by an adult); 30 min. Tales, Tunes, and

Tons of Fun! Make a Craft, too.

Howard County Library – Savage Branch

www.hclibrary.org

11:30 am

Play Partners

Ages infant-23 months with adult; 20-

30 min; Ticket required. Stories, baby

games, and musical activities.

Howard County Library – Central Branch

www.hclibrary.org

2 pm – 6 pm
Howard County Farmers Market
 Howard County General Hospital
 5755 Cedar Lane, Columbia
www.HowardCountyFarmersMarkets.com

Saturday, September 24

9:00 am – 1:00 pm
Historic Ellicott City Old Town Market
 The Wine Bin & Little French Market
 Old Ellicott City
www.ellicottcityoldtownmarket.com

9:00 am – 1:00 pm
Howard County Farmers Market
 Maple Lawn Center
 8191 Westside Blvd., Fulton
www.HowardCountyFarmersMarket.com

9:00 am – 1:00 pm
Glenwood Community Farmers Market
 Howard County Library – Glenwood Branch
 2350 MD-97, Cooksville

9:00 am – 5:00 pm
21st Annual Howard County Farm Heritage Days
 \$5.00 Admission Fee
 Ages 12 and above
 Living Farm Heritage Museum **4**
www.farmheritage.org

9:00 am – 5:00 pm
Pick Your Own Apples, Vegetables, Pumpkins, Apple Fritters Hayrides, Straw Maze, and Boo Barn (Ages 3-7)
 Larriland Farm **3**
www.pickyourown.com

10:00 am – 5:00 pm
Free Hay Rides to Pick Your Own Pumpkins
 Feed the Farm Animals; Scarecrow Making; Face Painting. Fall Pansies, Mums, Indian Corn & Much More. Educational Corn Maze & Mini Maze; Country Store. Plenty of Pumpkins for Retail or Wholesale. Food Available from J.Z.'s Brick Oven Pizza Food Truck!
 Sharp's at Waterford Farm **6**
www.sharpfarm.com

10:00 am – 5:00 pm
Pumpkin Coloring and Craft Activities Weekend
 To celebrate opening our PUMPKIN PATCH, we will have fun coloring and craft activities for the kids. Join in the fun and see what great pictures and crafts you can create. GEM MINING, too. Enjoy some Scoop & Paddle Ice Cream, CJ's Pit Beef and fresh local cider.
 Clark's Elioak Farm **1**
www.clarklandfarm.com

10:15 am
All Together Now
 All Ages
 Stories, songs, and activities for children and adults to enjoy together.
 Howard County Library-Central Branch
www.hclibrary.org

10:30 am
All Together Now
 All Ages; 30 min. Drop in, except where noted. Stories, Songs, and Activities for Children and Adults to Enjoy Together.
 Howard County Library – Savage Branch
www.hclibrary.org

10:30 am – 12:00 pm
Compost Demonstrations
 Master Gardeners discuss and demonstrate composting on a drop-in basis. Free bins provided for Howard County residents.
 Howard County Library – Miller Branch
www.hclibrary.org

10:30 am – 12:30 pm
Ask a Master Gardener
 Discuss gardening questions.
 Howard County Library – Miller Branch
www.hclibrary.org

HOWARD COUNTY FARM BUREAU
FARM TO TABLE
DINNER

Tuesday
September 27, 2016
 | 6PM |
CIRCLE D FARM
 Local Entertainment / Local Beer & Wine
TICKETS \$80
 FOR TICKETS & MORE INFO VISIT
WWW.HOWARDFARMBUREAU.ORG





MIKE, STEVE, & MARK

**BEFORE YOU BUY,
 GIVE US A TRY**

14420 Howard Road • Dayton, MD 21036
 410.489.4363 | 410.442.2688
 fax 410.489.7634
jdmullinixinc@aol.com
www.mullinixandsons.com



Saturday, September 24 *(continued)*

11:30 am

All Together Now

All Ages
Stories, songs, and activities for children and adults to enjoy together.
Howard County Library-Central Branch
www.hclibrary.org

2:00 pm

Build a Fairy House

Ages 9-12 with a parent; 90 min. Registration and signed release form required. From Folktales to Tolkien, Children's Literature is aflutter with fairy activity. In this workshop with Lisa Greenhouse from the Children's Department of the Enoch Pratt Free Library/ State Library Resource Center parents will work alongside their children to construct top-flight fairy accommodations using natural materials and modeling clay. Although plenty of materials will be provided, we encourage families to spend time in advance of the workshop collecting materials from nature such as twigs, shells and leaves to bring to class.
Howard County Library- Miller Branch
www.hclibrary.org

Sunday, September 25

9:00 am – 1:00 pm

Howard County Farmers Market

Oakland Mills Village Center
5851 Robert Oliver Place, Columbia
www.HowardCountyFarmersMarkets.com

9:00 am – 5:00 pm

21st Annual Howard County Farm Heritage Days

\$5.00 Admission Fee
For Ages 12 and Up
Living Farm Heritage Museum **4**
www.farmheritage.org

9:00 am – 5:00 pm

Pick Your Own Apples, Vegetables, Pumpkins, Apple Fritters Hayrides, Straw Maze, and Boo Barn (Ages 3-7)

Larriland Farm **3**
www.pickyourown.com

10:00 am – 5:00 pm

Pumpkin Coloring and Craft Activities Weekend

To celebrate opening our PUMPKIN PATCH, we will have fun coloring and craft activities for the kids. Join in the fun and see what great pictures and crafts you can create. GEM MINING, too. Enjoy some Scoop & Paddle Ice Cream, CJ's Pit Beef and fresh local cider.
Clark's Elioak Farm **1**
www.clarklandfarm.com

10:00 am – 5:00 pm

Free Hay Rides to Pick Your Own Pumpkins

Feed the Farm Animals; Scarecrow Making; Face Painting. Fall Pansies, Mums, Indian Corn & Much More. Educational Corn Maze & Mini Maze; Country Store. Plenty of Pumpkins for Retail or Wholesale Food Available from J.Z.'s Brick Oven Pizza Food Truck!
Sharp's at Waterford Farm **6**
www.sharpfarm.com

11:00 am – 3:00 pm

Fall Festival

Fall crafts, working blacksmith demonstration, live music & animals.
Cost: \$10.00 per car
Howard County Conservancy at Mt. Pleasant Farm **5**
www.hcconservancy.org

Monday, September 26

10:00 am to 5:00 pm

Petting Farm, Pumpkin Patch & Enchanted Pine Tree Forest

Clark's Elioak Farm **1**
www.clarklandfarm.com

10:00 am – 12:00pm

Fermentation

University of Maryland Extension
– Howard County Office
<http://extension.umd.edu/howard-county>

10:15 am

Picture Book Parade

Ages 2-5 with Adult; 30 min. Ticket required.
Tales, tunes and tons of fun!
Howard County Library – Central Branch
www.hclibrary.org

10:15 am

Farm Frolics

Ages infant-5; 30 min. Ticket required.
Down on the farm music and movement for you and your little one.
Howard County Library – Miller Branch
www.hclibrary.org

11:30 am

Picture Book Parade

Ages 2-5 with Adult; 30 min. Ticket required. Tales, tunes and tons of fun!
Howard County Library – Central Branch
www.hclibrary.org

11:30 am

Farm Frolics

Ages infant-5; 30 min. Ticket required.
Down on the farm music and movement for you and your little one.
Howard County Library – Miller Branch
www.hclibrary.org

6:30 pm

Play Partners

Ages infant-23 months with adult; 20-30 min; Ticket required. Stories, baby games, and musical activities.
Howard County Library – Central Branch
www.hclibrary.org

7:00 pm

Pajama Time

All Ages; 30 min. Stories and Music Just Before Bedtime. Pajamas, Teddy Bears, and Blankets welcome. Ticket required.
Howard County Library – Miller Branch
www.hclibrary.org

7:00 pm – 8:30 pm

Chickens in Your Backyard

Learn the Basics of Keeping Chickens in Your Backyard with presenters Cathy Hudson and Van Wensil.
Howard County Library – Glenwood Branch
www.hclibrary.org

7:00 pm – 8:30 pm

Ask a Master Gardener

Discuss gardening questions
Howard County Library – Miller Branch
www.hclibrary.org



AMANDA HOF

Tuesday, September 27

9:00 am – 6:00 pm

Pick Your Own Apples, Vegetables, and Pumpkins

Larriland Farm **3**

www.pickyourown.com

10:00 am – 5:00 pm

Petting Farm, Pumpkin Patch & Enchanted Pine Tree Forest

Clark's Elioak Farm **1**

www.clarklandfarm.com

10:15 am

Play Partners

Ages infant-23months with adult; 20-30 min; Ticket required. Stories, baby games, and musical activities.

Howard County Library – Central Branch

www.hclibrary.org

11:30 am

Play Partners

Ages infant-23 months with adult; 20-30 min; Ticket required. Stories, baby games, and musical activities.

Howard County Library – Central Branch

www.hclibrary.org

2:00 pm

Just for me

Ages 3-5; 30 min.

For children who are ready for an independent class that includes creative expression, listening comprehension and early reading skills. Ticket required.

Howard County Library – Miller Branch

www.hclibrary.org

6:00 pm

Farm to Table Dinner

Ticket required. \$80/ticket. Four-course dinner prepared by your favorite Howard County Buy Local Restaurants using the freshest ingredients from Howard County Farms! Local food, local beer and wine, and local entertainment. Have a chat with a Howard County Farmer and hear from special guest speakers Alan Kittleman, County Executive, and Howie Feaga, Howard County Farm Bureau President. Also bid to win special prizes in the silent auction! Circle D Farm. Hosted by Howard County Farm Bureau

www.howardfarmbureau.org

Wednesday, September 28

9:00 am – 6:00 pm

Pick Your Own Apples, Vegetables, and Pumpkins

Larriland Farm **3**

www.pickyourown.com

10:00 am – 5:00 pm

Petting Farm, Pumpkin Patch & Enchanted Pine Tree Forest

Clark's Elioak Farm **1**

www.clarklandfarm.com

10:15 am

3, 2, FUN!

Ages 2-3 with adult; 30 min. Stories, songs and activities. Ticket required.

Howard County Library – Miller Branch

www.hclibrary.org

10:15 am

Farm City

Ages 2-5 with an adult; 30 min. Ticket required.

Stories and songs that celebrate the farm-city connection.

Howard County Library – Central Branch

www.hclibrary.org

11:30 am

3, 2, FUN!

Ages 2-3 with adult; 30 min.

Stories, songs and activities. Ticket required.

Howard County Library – Miller Branch

www.hclibrary.org

11:30 am

Farm City

Ages 2-5 with an adult; 30 min.

Ticket required. Stories and songs that celebrate the farm-city connection.

Howard County Library – Central Branch

www.hclibrary.org

2 pm – 6 pm

Howard County Farmers Market

Howard County Library – Miller Branch

9421 Frederick Road, Ellicott City

www.HowardCountyFarmersMarkets.com

Thursday, September 29

9:00 am – 6:00 pm

Pick Your Own Apples, Vegetables, and Pumpkins

Larriland Farm **3**

www.pickyourown.com

10:00 am – 5:00 pm

Petting Farm, Pumpkin Patch & Enchanted Pine Tree Forest

Clark's Elioak Farm **1**

www.clarklandfarm.com

10:30 am

Butterfingers

Ages 2-5 with adult; 20 min. Make fresh butter, then sample it with a cracker. Ticket required.

Howard County Library – Glenwood Branch

www.hclibrary.org

2:00 pm – 3:30 pm

Chickens in Your Backyard

Learn the Basics of Keeping Chickens in Your Backyard with presenters

Cathy Hudson and Van Wensil.

Howard County Library – Glenwood Branch

www.hclibrary.org

2:00 pm – 6:00 pm

East Columbia Farmers Market

Howard County Library – East Columbia Branch

7:00 pm

Pajama Time

All Ages; 30 min.

Stories and Music Just Before Bedtime.

Pajamas, Teddy Bears, and Blankets

welcome. Ticket required.

Howard County Library – Central Branch

www.hclibrary.org

7:00 pm – 8:30 pm

Honeybees, Beekeeping and a Sustainable Society

Learn about the vital role of the honeybee as a major pollinator and how we can make a positive contribution to the health of the honeybee with Howard County Master Gardener Carol Link.

Howard County Library – Savage

Friday, September 30

9:00 am – 6:00 pm

Pick Your Own Apples, Vegetables, and Pumpkins

Larriland Farm **3**

www.pickyourown.com

10:00 am – 12:00 pm

Fermenting/Pickling

Learn the principles and techniques of fermentation and pickling. Registration required.

University of Maryland Extension-Howard County

www.howardcounty.umd.edu

10:00 am – 5:00 pm

Petting Farm, Pumpkin Patch & Enchanted Pine Tree Forest

Clark's Elioak Farm **1**

www.clarklandfarm.com

10:15 am

Play Partners

Ages infant-23 months with adult; 20-30 min; Ticket required. Stories, baby games, and musical activities.

Howard County Library – Central Branch

www.hclibrary.org

11:30 am

Play Partners

Ages infant-23 months with adult; 20-30 min; Ticket required. Stories, baby games, and musical activities.

Howard County Library – Central Branch

www.hclibrary.org

2 pm – 6 pm

Howard County Farmers Market

Howard County General Hospital

5755 Cedar Lane, Columbia

www.HowardCountyFarmersMarkets.com



ERICA KAVIDAS

Saturday, October 1

9:00 am – 1:00 pm
Historic Ellicott City Old Town Market
 The Wine Bin & Little French
 Market, Old Ellicott City
www.ellicottcityoldtownmarket.com

9:00 am – 1:00 pm
Howard County Farmers Market
 Maple Lawn Center
 8191 Westside Blvd., Fulton
www.HowardCountyFarmersMarket.com

9:00 am – 1:00 pm
Glenwood Community Farmers Market
 Howard County Library – Glenwood Branch
 2350 MD-97, Cooksville

9:00 am – 5:00 pm
Pick Your Own Apples, Vegetables, Pumpkins, Apple Fritters Hayrides, Straw Maze, and Boo Barn (Ages 3-7)
 Larriland Farm **3**
www.pickyourown.com

10:00 am – 5:00 pm
Pumpkins, Pumpkins Pumpkins!
 Free Hay Rides to Pick Your Own Pumpkins. Feed the Farm Animals; Scarecrow Making; Face Painting. Educational Corn Maze & Mini Maze; Country Store. Plenty of Pumpkins for Retail or Wholesale. Baked goods, apple cider, local honey and so much more! Food available from J.Z.'s Brick Oven Food Truck. Sharp's at Waterford Farm **6**
www.sharpfarm.com

10:00 am – 5:00 pm
Teddy Bear Farm Visit
 Bring teddy bears! Free hayrides for all children who bring a Teddy Bear. Join in the Teddy Bear Contest at 1 PM and 3 PM Saturday and Sunday. Folk singing with TONY MCGUFFIN Noon to 4 PM both days. GEM MINING, too. Enjoy some Scoop & Paddle Ice Cream, CJ's Pit Beef and fresh local cider. Clark's Elioak Farm **1**
www.clarklandfarm.com

10:00 am – 5:00 pm
Meet the 4-Hers
 Pick your Own Pumpkins
 TLV Farm **7**
www.tlvtruffelfarm.com

10:30 am
Howard County- Iron Bridge Hounds
 Join us for a 10:30 am Hayride through our 530-acre farm. Then enjoy the sight of horses & riders & lots of happy hounds! Sharp's at Waterford Farm **6**
www.sharpfarm.com

10:30 am – 12:30 pm
Ask a Master Gardener
 Discuss gardening questions.
 Howard County Library – Miller Branch
www.hclibrary.org

3:00 pm – 4:30 pm
Meet the Author: Forrest Pritchard
 Forrest Pritchard, New York Times best-selling author, seventh generation sustainable farmer, and author of Growing Tomorrow: A Farm-to-Table Journey in Photos and Recipes, discusses the importance of sustainable farming. Books available for purchase and signing. Howard County Library – Miller Branch
www.hclibrary.org

Sunday, October 2

9:00 am – 1:00 pm
Howard County Farmers Market
 Oakland Mills Village Center
 5851 Robert Oliver Place, Columbia
www.HowardCountyFarmersMarkets.com

9:00 am – 5:00 pm
Pick Your Own Apples, Vegetables, Pumpkins, Apple Fritters Hayrides, Straw Maze, and Boo Barn (Ages 3-7)
 Larriland Farm **3**
www.pickyourown.com

10:00 am – 5:00 pm
Pumpkins, Pumpkins Pumpkins!
 Free Hay Rides to Pick Your Own Pumpkins. Feed the Farm Animals; Scarecrow Making; Face Painting. Educational Corn Maze & Mini Maze; Country Store. Plenty of Pumpkins for Retail or Wholesale. Baked goods, apple cider, local honey and so much more! Food available from J.Z.'s Brick Oven Food Truck Sharp's at Waterford Farm **6**
www.sharpfarm.com

10:00 am – 5:00 pm
Teddy Bear Farm Visit
 Bring teddy bears! Free hayrides for all children who bring a Teddy Bear. Join in the Teddy Bear Contest at 1 PM and 3 PM Saturday and Sunday. Folk singing with TONY MCGUFFIN Noon to 4 PM both days. GEM MINING, too. Enjoy some Scoop & Paddle Ice Cream, CJ's Pit Beef and fresh local cider. Clark's Elioak Farm **1**
www.clarklandfarm.com

11:00 am – 3:00 pm
Fall Festival at the Howard County Conservancy
 Watch blacksmiths hammering iron in their shop, listen to blue grass music, join the square dance and explore the historic three-century-old farm. Visit our pygmy goats, the chickens, Onyx the snake and Ranger the barred owl. There are children's crafts, pumpkin decorating and hay rides. Browse the craftsmen's stations to admire chair caning, basket weaving, wood turning, gourd decorating and more. Admire the alpaca family and the gorgeous knit and woven products made from their soft, super-warm wool. Leap the hay bales. Stock up on grass-fed beef and pork and the finest fall vegetables and fruit at the farm stand. Food and beverages available to purchase. For this busy event, please leave your pets at home. Check website if weather is uncertain. \$10/car. Howard County Conservancy
www.hconservancy.org

Saturday, October 8

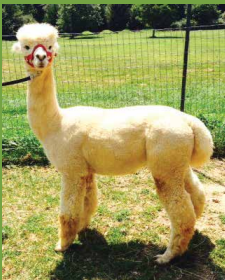
10:00 am – 3:00 pm
University of Maryland College of Agriculture and Natural Resources Open House
 Fun and Educational Activities for all Ages. Free! Rain or Shine
www.agnr.umd.edu/openhouse
 CMREC – Clarksville Facility
 4240 Folly Quarter Rd., Ellicott City, MD 21042

Please check the websites of our farms for other events throughout the month of October.



Take a tour at **Breezy Hill Alpaca Farm** located in Woodbine, MD. See our alpacas, exotic breed chickens, peacocks, goats, sheep, and donkey. Bring your friends and families to enjoy the peace and tranquility of farm life in Howard County.

Breezy Hill offers a variety of classes for the artisan in you including: spinning, weaving and felting. Group, 1:1 or tailored classes to fit your interests – let your creativity soar! Visit our website or contact us directly.



Need some shopping therapy? Our well stocked boutique offers a great mix of alpaca-fiber clothing and accessories. Knitters and spinners will love our one-of-a-kind roving and yarn (made with our alpaca fiber and by local Maryland fiber mills).

Come spend a day on the farm and make your memories at Breezy Hill!

2820 WOODBINE RD, WOODBINE, MD
410.489.5802 • bhalpaca.com

FARM BREWED

in Ellicott City, Maryland

TAP ROOM HOURS

FRIDAY	4-8:30PM
SATURDAY	11-8:30PM
SUNDAY	11-6PM



For reservations visit manorhillbrewing.com

Clark's Elioak Farm
Farming in Howard County since 1797

VOTED BEST OF HOWARD COUNTY
2015
HOWARD MAGAZINE

CLARK'S ELIOAK FARM

Petting Farm • Pony Rides • Hayrides • Birthday Parties • Educational Tours • Fall Season Pumpkin Patch • Enchanted Forest Attractions & More

Meats & Eggs available year-round • Summer Roadside Produce Stand

10500 CLARKSVILLE PIKE, ELLICOTT CITY, MD 21042
410-730-4049 | clarklandfarm.com

Tersiguel's
FRENCH COUNTRY RESTAURANT

CELEBRATING 41 YEARS

Located in Historic Ellicott City, Tersiguel's is an original "from the farm to your plate" dining experience since 1990. Our seasonal menu offers a blend of both traditional and modern takes on French Country fare.

www.tersiguels.com
8093 Main Street, Ellicott City, MD 21043
410-465-4004

twitter - tersiguelsFCR • Facebook - tersiguels
Gift cards available • Private rooms • Book your holiday parties now
Zagat rated • Howard County Best Chef 2010/2011

MARBIDCO Has Assisted Some of Your Farm Business Neighbors... Can We Help You, Too?

Did you know MARBIDCO has assisted with financing more than a dozen Howard County farm-related businesses, often by working in collaboration with the Howard County Economic Development Authority?

Since its inception in 2007, MARBIDCO has funded over 350 farm and rural business projects in almost every county in Maryland. Additionally, MARBIDCO has assisted more than 160 young and beginning farmers (many with helping to purchase their first farms); supported the implementation of almost 140 on-farm value added processing projects; and, helped State and county governments to preserve rural working land through bond finance programs.

MARBIDCO's popular business lending program, the Maryland Resource-Based Industry Financing Fund (MRBIF), helps meet the unique financing needs of Maryland farm, forestry and seafood businesses. Young and beginning farmers are a special focus of this program. The maximum loan amount is \$250,000 for acquisition of equipment and fixed assets, \$450,000 for real estate purchases, food/meat processing and renewable energy projects, and \$650,000 for large-scale food/fiber processing projects (of \$2.5 million and up). A matching Farm Credit, commercial bank, or county agency participation is required.

To find out how MARBIDCO programs can help with your farm or forestry business financing projects, please contact us at (410) 267-6807, or visit us on the web at www.marbidco.org.

Pictured are two examples of the matching grants made by MARBIDCO and the Howard County Economic Development Authority using the Local Government Ag/RBI Cost Share Program. At left: The on-farm meat freezer at Clark's Elioak Farm. Above: Heritage Hills' compost tumbler.

Howard is for HORSES!

Visit our Horse Discovery Centers at Clark's Elioak Farm, Columbia Horse Center and Days End Farm Horse Rescue. Take a trail ride Palapso Stables in Marriottsville. Learn to ride & enjoy horses at over 30 licensed lesson and boarding barns. Experience horses up close & personal at Howard County Fair's 7 days of horse shows, rodeos & draft horse & Western riding competitions, the Lisbon Horse Parade, and other events across the county.

Howards County has always been a haven for horses, a place to ride & learn horsemanship, experience thrilling horse sports and enjoy scenic farms.

Robert Keller

ADOPT. LEARN. SERVE.

DEFHR
EQUINE RESCUE & EDUCATION FACILITY
IN HOWARD COUNTY, MARYLAND
1375 WOODBINE RD, WOODBINE, MD 21797
(301)84-3031 • DEFHR.ORG

94% OF DEFHR HORSES ARE ADOPTED

42,000+ PEOPLE LEARN FROM DEFHR ANNUALLY

DEFHR HAS SERVED 2,100+ HORSES SINCE 1989

ADOPT, LEARN & SERVE IN THE HEART OF HOWARD COUNTY, MD WHERE "HOWARD IS FOR HORSES"

Mullinix Corn Maze
FAMILY OWNED & OPERATED SINCE 2010

10 Acres of Fun!
DON'T GET LOST UNTIL YOU GET HERE!

Open September 23rd thru October 30th
Fridays 3pm-10pm
Saturdays & Sundays 10am-6pm

Straw Maze • Corn Pit • Hay Rides • Food and Snacks
Mums, Pumpkins, Apples & Apple Cider

ADMISSION: \$9. KIDS UNDER 3 ARE FREE.
LAST TICKET SOLD ONE HOUR PRIOR TO CLOSING

Visit our website for directions and additional information mullinixcornmaze.com | 410.245.6014

Community Supported Agriculture
CSA: Providing members weekly shares of our farm's organically grown vegetables.
Visit the website for all membership and farm details.

CSA
GORMAN FARM
GORMANPRODUCEFARM.COM

GREENWAY FARMS

14098 REPS ROAD, COOKSVILLE, MD 21723
15097 ROUTE 144, WOODBINE, MD 21797
410.442.2588
www.greenwaytrees.net

CHRISTMAS TREES & POINSETTIAS

HERE TO HELP...

Farmers and Landowners:
Soil Conservation Plans

Homeowners:
Sediment and Erosion Control

Teachers and Youth Organizations:
Educational Outreach

How can we help YOU?

14725 Frederick Road
Cooksville, Maryland 21723
410.313.0680 | www.howardccd.org

Sharp's at Waterford Farm

CREATE YOUR FARM FUN HERE!

410.489.2572 • sharpfarm.com

**TLV
TREE
FARM**

NOT JUST A TREE FARM...
 CSA • EDUCATIONAL FARM TOURS
 FARM FRESH MEATS • VEGETABLES/FRUITS
 FARMERS MARKET • PICK YOUR OWN PUMPKINS
 CUT YOUR OWN CHRISTMAS TREE
 WHOLESALE VEGETABLES

(410) 489-4460 | tlvtreefarm.com
 15155 Triadelphia Mill Rd., Glenelg, MD 21737

**LIMESTONE VALLEY
NATURAL ANGUS BEEF**

Born & Raised in Clarkeville
 Fed Grass & Grain Grown on Our Farm
 NO Hormones or Antibiotics
 Processed to Order at Local Meat Locker
 Whole, Half, Quarter Animals Available
 HAY & STRAW AVAILABLE FOR SALE

For more information call 443-756-3311 or email mclarb21029@aol.com

**JSR
Star
Services**

JSRSTAR (Service That Attracts Recognition) is a multifaceted business whose services include safety and emergency action planning for farms and agrotourism operations. Contact us for more information about these and the other services provided by JSRSTAR.

410.988.8165 • info@jstar.com
www.JSRSTAR.com

LARRILAND FARM

**PICK YOUR OWN
FARM MARKET**
 Berries, Fruits & Vegetables

CALL BEFORE COMING
 410.442.2605 • 301.854.6110
 2415 Woodbine Rd.,
 Woodbine, MD 21797
www.pickyourown.com

Located in scenic western Howard County

WAGON WHEEL RANCH

We sell our free range, drug free, naturally raised beef, lamb, pork, goat, chicken, duck and turkeys raised right here in Howard County to health food stores like Whole Foods Market, David's Natural Market and Mom's Organic Market

If you want to buy in bulk,
WE SELL DIRECT TO YOU!
 Visit our website for more information.

661 West Waterville Rd., Mount Airy, MD 21771 • Hours: 9-5 Monday-Friday 9-2 Saturday
WAGONWHEELRANCH.org 443.257.5098 | 443.271.6850

Farm and Home Service has everything you could need for your lawn, garden & farm with 6 convenient locations in Maryland to serve you. Family owned and operated.

**One Stop Service - Lawn & Garden/Pet Food & Supplies/
 Southern States Products - Delivery Available**

FHS
 Farm & Home Service, Inc.

7025 Main Street Sykesville, MD 21784 (410) 765-4254	9364 Frederick Road Ellicott City, MD 21042 (410) 465-0008	23000 Davis Mill Road Germantown, MD 20876 (301) 965-8147
1 Commerce Street Newport, MD 21085 (410) 756-4211	6215 Old River Road Piedmont, MD 21083 (301) 948-5372	620 Spouter Road Branzburg, MD 21716 (301) 534-7141

www.farmandhomeservice.com
 Like Us on Facebook

FRANK'S GARAGE

We service most types of lawn & garden equipment, select service for automobiles, truck trailers, farm tractors & equipment, welding & other repairs. Pick up & delivery available. Celebrating over 73 years of service.

410.241.0695 or 410.531.2569
info@franksgarage.biz
 11761 Triadelphia Rd, Ellicott City, MD
www.franksgarage.biz

FRESH TO YOUR TABLE...

**CENTRE
PARK
GRILL**

FROM THE FARMER'S MARKET...

8808 Centre Park Dr. Rt 108: Ellicott City / Columbia
 (410) 997-0050 • www.CentreParkGrill.com

SCOOP & PADDLE
 ICE CREAM COMPANY

ALL NATURAL, ALL HANDMADE, EVERY BIT OF IT, EVERY TIME. WE WOULDN'T SETTLE FOR ANYTHING LESS. AUTHENTIC AMERICAN ICE CREAM & ICE CREAM SANDWICHES IN FLAVORS YOU CAN'T WAIT TO TRY!

Check out our schedule, and stop by for single serve cups, ice cream sandwiches, and pints of handmade goodness:

Market at River Hill Garden Center: Saturdays: 9am-1pm
 12165 Clarksville Pike Clarksville, MD 21029

Howard County Farmers Market Miller Library
 1421 Frederick Ave, Ellicott City, MD 21042
 Wednesdays: 2-5 PM

Clarke's Elbow Farm at the Peeling Farm,
 Saturday & Sundays: 11am-5pm

www.SCOOPANDPADDLE.com

SIGN UP NOW FOR OUR SUMMER/FALL CSA!



Buy Local & Eat Healthy Each Week Through Breezy Willow Farm's Community Supported Agriculture!

Sign up now online for Breezy Willow Farm's 2016 Value-Added Summer/Fall CSA, and receive goodies weekly, June - November!

Breezy Willow Farm links with local farms & small businesses to provide our customers the widest variety of farm-fresh goodies!

You will receive between 10 & 11 items weekly: An assortment of 8 fruits & veggies, a dozen cage-free natural eggs & your choice of premium bread baked for us using freshly milled flour by Great Harvest or The Breadery.

On-Farm Store open every Saturday, 10am-2pm!
Local pasture raised meat & eggs, honey, cheese, nuts, butters, soups, & more.

Breezy Willow Farm
Howard County, Maryland
410-442-1807 | www.breezywillowfarm.com

I made it & I love it!



Make your own world-class wine at Tin Lizzie Wineworks in Clarksville, MD

TIN LIZZIE wineworks

For more information: Call 301-518-0954
Email dave@tinlizziewineworks.com
Visit www.tinlizziewineworks.com



HENSING FARM
We sell home-raised, pasture-raised meats. We believe that healthy animals provide healthy food for healthy people! We are a small farm and live on 3.5 acres in Dayton, MD.

CURRENTLY FOR SALE:
Raw Milk, Labeled & Sold as Pet Milk
Pastured meat and Eggs, non-GMO

Contact us for a farm tour or if you are interested in purchasing our products.
704.293.4126 | kelly@hensingfarm.com
www.hensingfarm.com

Find Howard County's **BEST KEPT SECRET**
at 12985 Frederick Road, West Friendship, MD 21794



HOWARD COUNTY LIVING FARM HERITAGE MUSEUM

For more information, visit farmheritage.org

"What A Real Pet Store Should Be & More"

TODAY'S PET

Specializing in the area's LARGEST selection of...
LOVING PUPPIES & KITTENS FOR SALE & ADOPTION!

Puppies and kittens are available for sale from qualified breeders. You may also place an existing pet or adopt a new pet from our adoption center or through www.indogpet.com

Over 50 breeds of quality, natural & holistic dog foods.

(443) 878-1920
Gateway Overlook to US & 175 (Near to Green)

A Today's Pet is tomorrow's best friend.

VR Growth and Learning Center



Brenda Von Bantzen
M.S., NCC, EACALA Certified Psychotherapist

Equine Assisted Psychotherapy
Specializes in Children and Adolescents
Individual/Couples/ Family
Equine Assisted Psychotherapy provides a hands-on approach

Equine Corporate Teambuilding Center is an innovative and experiential program offered to corporations and other businesses that wish to improve various skills in their teams. Our program uses team-building exercises with our horses and facilities to develop leadership, communication, personal growth, corporate culture, and positive team development.

brendavonban@vrl.com • 301.941.0901
Visit our website for more information vrltherapycenter.com

HOWARD COUNTY FARM BUREAU

FARM TO TABLE DINNER

Tuesday
September 27, 2016
6PM

CIRCLE D FARM
Local Entertainment / Local Beer & Wine

TICKETS \$80
FOR TICKETS & MORE INFO VISIT WWW.HOWARDFARBUREAU.ORG




J. David Mullinix AND SONS

MIKE, STEVE, & MARK

BEFORE YOU BUY, GIVE US A TRY

14420 Howard Road • Dayton, MD 21036
410.489.4363 | 410.442.2688
fax 410.489.7634
jdmullinixinc@aol.com
www.mullinixandsons.com



Breezy Hill Farm Alpacas

Take a tour at Breezy Hill Alpaca Farm located in Woodbine, MD. See our alpacas, exotic breed chickens, peacocks, goats, sheep, and donkey. Bring your friends and families to enjoy the peace and tranquility of farm life in Howard County.

Breezy Hill offers a variety of classes for the artisan in you including: spinning, weaving and felting. Group, 1:1 or tailored classes to fit your interests - let your creativity soar! Visit our website or contact us directly.

Need some shopping therapy? Our well stocked boutique offers a great mix of alpaca-fiber clothing and accessories. Knitters and spinners will love our one-of-a-kind roving and yarn (made with our alpaca fiber and by local Maryland fiber mills).

Come spend a day on the farm and make your memories at Breezy Hill!

2820 WOODBINE RD, WOODBINE, MD
410.489.5802 • bhalpaca.com

FARM BREWED
in Ellicott City, Maryland

TAP ROOM HOURS
FRIDAY 4-8:30PM
SATURDAY 11-8:30PM
SUNDAY 11-6PM



For reservations visit manorhillbrewing.com